

Gleaning Farm Info: Agrologists coming to a field near you

To support the long-term viability of the farming industry, the Ministry of Agriculture, Food and Fisheries, plus the Partnership for Water Sustainability in BC are working together to complete an Agricultural Land Use Inventory (ALUI) for the City of Chilliwack. The project will update information gathered in 2012 and provide insight into changes in farmland use.

Once complete the survey data will:

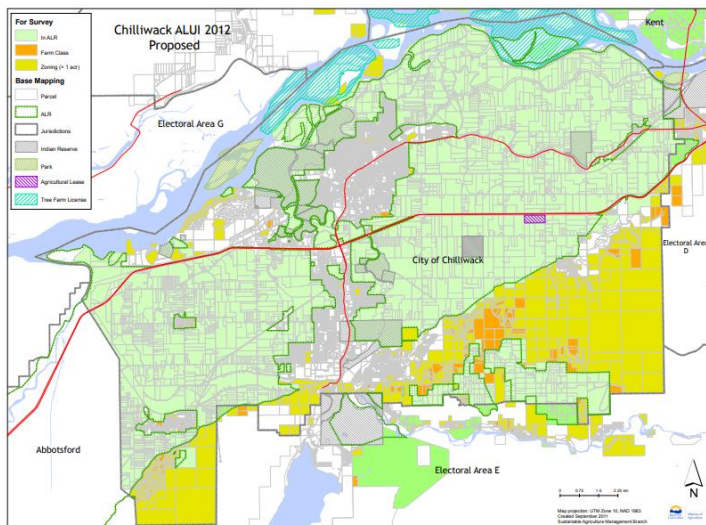
- Demonstrate the amount of actively farmed land in the region;
- Enable comparison with past reports to measure changes in land use and farming;
- Assist land use planning including official community plans;
- Enable examination of water management alternatives that consider future land use changes;
- Help model impacts of climate change and identify appropriate adaptation strategies; and
- Inform future water storage modelling projects.

BC Ministry of Agriculture staff will be navigating public roads to observe farmland from within or beside the vehicle using binoculars. Data will be collected on crops, irrigation, livestock, and other land uses with the Agricultural Land Reserve and properties where farming is observed.

Watch for a grey Dodge Durango or other vehicle with B.C. government decals within the City of Chilliwack between July 7th and September 17th, 2021.

Funding is provided in part by the BC Ministry of Agriculture and Agriculture and Agri-Food Canada through the Canadian Agricultural Partnership, a five year (2018-19 to 2022-23), \$3 billion investment by federal provincial and territorial governments to strengthen the agriculture, agri-food and agri-based products sector, ensuring continued innovation, growth and prosperity.

This survey is subject to the requirements of the Freedom of Information and Protection of Privacy Act.



For further information, contact:

Corrine Roesler, PAg
BC Ministry of Agriculture, Food and Fisheries
Abbotsford
778.666.0569
Corrine.Roesler@gov.bc.ca

Or

Kevin Eastwood, PAg
BC Ministry of Agriculture, Food and Fisheries
Abbotsford
778.752.5900
Kevin.Eastwood@gov.bc.ca

To learn more about the ALUI program visit:

<https://www2.gov.bc.ca/gov/content/industry/agriculture-seafood/agricultural-land-and-environment/strengthening-farming/planning-for-agriculture/agricultural-land-use-inventories>