

Recreation and Culture



Recreation and Culture is responsible for facility maintenance, community events, and sports field bookings.

Fourth Quarter Report, 2020



**CITY OF
CHILLIWACK**

Recreation and Culture Events



Celebration and Activity Grant:

Through the months of October, November, and December, the Celebration and Activity Grant program supported two virtual events: the production of a Remembrance Day video for the community, and a free online workshop that led holiday related activities including how to bake a healthier cake.

Community Events:

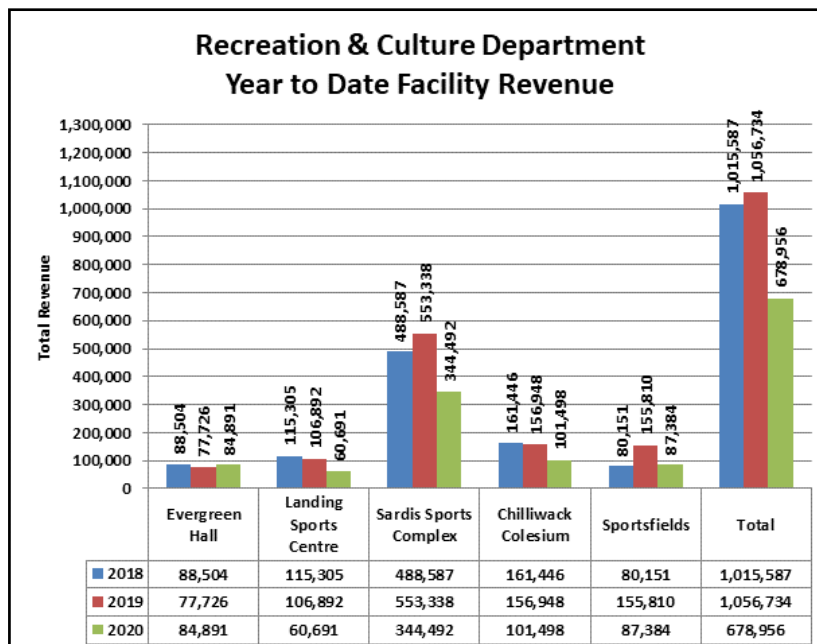
Some of the significant events that occurred this quarter included:

- Remembrance Day ceremonies
- Rotary Christmas Variety Show
- Drive Thru Christmas Light Up event

Remembrance Day ceremonies were held at both Sardis and Chilliwack cenotaphs in remembrance of veterans. Public Health Orders at the time allowed both events to proceed with limited attendees resulting in smaller events and significantly reduced disruptions to City roadways. One Legion provided their service over live stream so the community could honour veterans safely from home. The Rotary Christmas Parade was cancelled and became the Rotary Christmas Variety Show which was online throughout December and received 30,000 views while featuring local businesses, artists, and well-known members of the community. The City of Chilliwack contributed financial support to both the Rotary Christmas Variety Show and the Drive Thru Christmas Light Up event.



Recreation and Culture Facility Report



Promontory Heights Elementary Community School

PHECSA scaled back fall programming due to COVID-19. The Panther Pen Childcare program remained open to offer before and after-school childcare to the community. PHECSA continued to offer the At Home Alone Course, on a regular schedule. PHECSA also offered private piano lessons, which operated at full capacity with a wait list.



Chilliwack Heritage Park

Almost every fourth quarter event at Chilliwack Heritage Park was cancelled in response to Provincial Health Orders and any rental that proceeded was drastically modified to adhere to all orders. Rentals included a very modified Rotary Book Sale, indoor motorcycle race with only a few competitors, and a drive-through flu clinic.



Great Blue Heron Nature Reserve (GBHNR)

Multiple fall homeschool programs (two art and outdoor education combinations, one full outdoor, and one nature sketching) ran through the beginning of November. Weekly yoga classes happened through October and two weekend-long art workshops were held in late October and early November. Indoor programs were put on hold beginning November 9 due to COVID-19. Four outdoor school programs were run in November.

Free public events this quarter included small, socially distanced, guided walks in early October (Thankful for Nature Guided Walk) and late October (Halloween Creepy Crawlies Guided Nature Walk and Talk). Weekly "creature features" are being posted on Facebook to highlight some of the many interesting species that live in the reserve and provide ongoing community connection. The Interpretive Centre was closed on November 9, but private interpretive centre visits can still be arranged and the trails continue to get a lot of use.



With the help of a Chilliwack Foundation Grant, over 30 new educational interpretive signs were put up on the Salwein Loop Trail in November and fish population surveys and benthic invertebrate surveys were conducted throughout the reserve in late November and early December.



Rosedale Traditional Community School Society

RTCSS continued to provide out of school care programming for children ages 0-12 years of age. Country Kids Childcare Center, managed by RTCSS, ran three programs:

- Chickadees, 0-3 years of age; 11 children registered
- Sparrows, 3-5 years of age; 34 children registered
- Ravens, 5-12 years of age; 45 children registered

The Childcare Centre opened from 7:00 AM - 6:00 PM on a part-time or full-time basis. The Chickadees and Sparrows arrived in the morning and the Ravens began at 2:00 PM after the school day finished, or in the mornings on Professional Development Days and during Christmas Break.



Chilliwack Central Elementary Community School Society



CCECSS offered partial community programming open only to children at reduced capacity this fall while following all health and safety protocols for COVID-19. These successfully ran well attended programs including basketball, soccer for ages 3 to 5 and 6 to 8, karate, and expressive art.

The Tween Club drop-in program also ran weekly, open to students from surrounding schools in grades 3 to 5 from 5:00 PM to 6:30 PM. The program moved to Wednesday nights and reduced its programming by a half hour to allow custodial extra time to clean.

CCECSS was unable to host the annual Santa Pancake Breakfast event for Central families. Largely due to the generous donation of \$1,500 from the Chilliwack Dogwood Monarch Lions Club and the financial support from the City of Chilliwack, each Central family was provided with a "Santa Breakfast bag" filled with pancake mix, syrup, fruit, sausages, juice, a game to play as a family and more in keeping with the spirit of the Santa Pancake Breakfast. The bags were packaged by WEX high school student volunteers.



185 families - Santa Breakfast
49 participants - community classes
98 participants - Tween Club



Chilliwack Museum

The Chilliwack Museum and Archives returned to full operating hours on October 13. This included an extension of hours on Thursday evenings until 8:00 PM.

Funding:

Government of Canada – Young Canada Works (BCH): The Chilliwack Museum and Archives has been awarded \$12,000 through the Young Canada Works program to hire an Archives Assistant Intern.

Anonymous Donation: a private donor donated \$5,000 to the Museum & Archives in December 2020.

Chilliwack Foundation Legacy Fund: The Chilliwack Museum and Archives received \$10,895.07 from the Chilliwack Foundation Legacy Fund.



Topographical Map of Chilliwack created by students at A.D. Rundle and submitted to "Creative in Quarantine"

Curatorial & Exhibitions:

Contours: The Shape of Our City: The exhibition is featured from September 10, 2020 to April 24, 2021. The exhibition explores the impact maps and the processes associated with mapping had (and continue to have) on our daily lives living on and within S'ólh Téméxw (Our World).

Creative in Quarantine: The exhibition closed on December 23 and featured more than 100 submitted pieces of imaginative works that the community of Chilliwack created at home during the COVID-19 economic shutdown.

Our Living Languages: Staff began preparation and contract discussions for this incoming travelling exhibition from the Royal British Columbia Museum slated to open on January 16, 2021.

Education & Engagement:

Staff connected with high school teachers to explore the options for virtual museum programming in classrooms. A.D. Rundle Middle School students created a topographical map of Chilliwack which was submitted to the "Creative in Quarantine" exhibition. 80 students and teachers toured the exhibition in October to view their piece on display.

Unique Donation:

Teskey Family Fonds (2020.041) - A family history of the Teskey Family written by Benjamin J.E. Teskey. The donation includes family papers, a family history, photographs, and WWII medals.



The front page of "Some Family History" (2020.041)

Archives Stats	Oct.	Nov.	Dec.	Total
Visitors	19	17	6	42
Research phone calls	24	15	23	62
Research emails	10	8	12	30
Photo orders	4	6	3	13



Chilliwack Landing Leisure Centre & Cheam Leisure Centre



Chilliwack Landing Leisure Centre

Through limited course offerings, 26 participants were newly certified in Red Cross Standard First Aid and CPR C, seven staff members re-certified their Water Safety Instructor skills, and seven new lifeguards were certified to serve the community. During this time, approximately 120 community youth and students participated in the parent-led Learn to Swim group lessons at both the Chilliwack Landing and Cheam Centre.

The building received new emergency strobe lighting in the lobby and aquatic changerooms, the water slide received some fibre glass repair and new caulking, and new piping was added to the water main located in the sprinkler room.



Advanced course supplies

Attendance for the fourth quarter:
7,797 at the CLLC
7,510 at the Cheam

Cheam Leisure Centre

The Cheam Leisure Centre saw a brief return of group fitness and swimming lessons. Return to Fitness was a great success with anywhere from 8 to 24 participants in the socially distanced and COVID-19 safe programs.

In December, themed days were offered to the community and staff at the facility for community connection and family involvement over the Christmas season. From video lessons for crafts, to virtual readings and cookie recipes, the facility brought holiday cheer in many areas through social media. The facility shared motivational Mondays and Water Safety Wednesdays with the community through engagement pieces and contests on Facebook and Instagram.



Return to Fitness

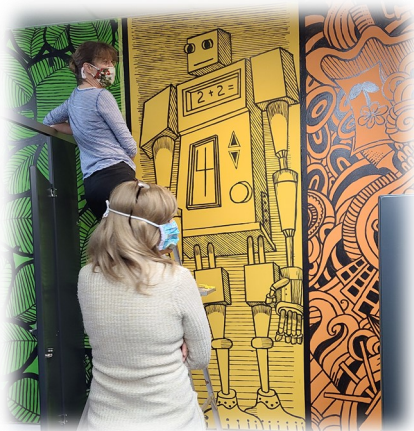


Christmas Sock Day



Chilliwack Cultural Centre

The Chilliwack Arts & Cultural Centre briefly re-opened the HUB International Theatre for select performances under strict protocols. Due to the November 19 Public Health Order the HUB International Theatre, Rotary Hall Studio Theatre, and O'Connor Group Art Gallery suspended operations. The Society continued to work with artists, promoters, and instructors to schedule alternate dates for shows, events, and classes. Patrons are contacted for each show and class once dates are re-scheduled with a refund or credit for patrons that request one.



Washroom mural

Events:

In October the Chilliwack Cultural Centre celebrated its 10 year anniversary with a free live streaming of the **Barney Bentall** concert in addition to the maximum 50 patrons in the live audience.

In October and November, **Chris Funk: The Wonderist** performed two shows on October 9 & 10, **Boomerang Four with Ted Kim** took place on October 17, and **God is a Scottish Drag Queen: Pandemic Edition** performed two shows on November 6. All shows took place with limited audiences to a maximum of 50 patrons.

Online Local Performances:

For the 10 year anniversary, the Society reached out to some of the Centre's past performers for video clips talking about the Centre. A video was put together and posted on the Centre's YouTube page.

The Chilliwack Arts & Cultural Centre Society also continued producing mini-concerts featuring local performers to help keep the community connected to art during this downtime. These concerts are available for free on the Centre's social media. Artists in the Fall included NAXX, Molly Wilson, Jackson Overend, and The Maybelles.

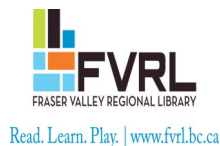
In December, the Society hired a series of local musicians to produce 12 music videos to send out some holiday cheer. A video was added each day starting on December 14 right up to December 25.

Arts & Crafts Classes:

Art & Crafts classes resumed in a very limited capacity and were moved to the Rotary Hall Studio Theatre and other larger areas so strict social distancing could be observed. All class participants were required to wear face coverings. The classes offered included Perspective Drawing, Intro to Watercolour, Colour Mixing with Acrylics, Beginning Photography, Paint with Pat, Drawing Basics, World of Colour, Still Life with Acrylics, and Intro the Drawing. All classes stopped on November 19.



Hallway mural



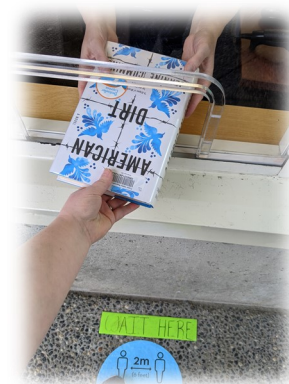
Chilliwack Library



Halloween

The Chilliwack Library focused heavily on its online presence through social media. For Halloween, costumed staff decorated the children's section and encouraged Facebook followers to "snap a spooky selfie while stocking up on scary stories."

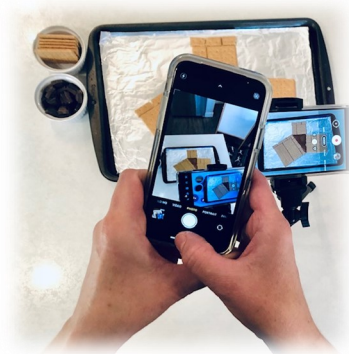
When the library reopened, City of Chilliwack staff installed a pickup window that allowed customers to access materials without having to physically enter the library. This was a great option for those unable to wear masks to still get the resources they need. Staff have begun to take stats of these visits and were delighted to hear 593 people visited the window in October, and 733 in November.



Pickup window

Fraser Valley Regional Library began its annual Food For Fines campaign on December 9. The program, which allows customers to "pay" their library fines with canned food donations, is a popular program that benefits everyone involved. The Chilliwack Library supports the Chilliwack Community Cupboard with its local donations. The Community Cupboard has a vision to provide food, clothing and basic necessities to struggling families of students under 19 living in their home.

Sardis Library



Virtual Programming

In an effort to stay connected, the Sardis Library increased its presence on a number of social media platforms. This allowed the library to provide continuity to its customers with programs such as the Reading Link Challenge. Virtual programming has allowed staff to continue to engage with customers by offering story times, baby time and STEAM learning.

In December, the library virtually hosted an author via Zoom. Heather Redmond is an author of commercial fiction and also writes as Heather Hiestand. Heather talked about her two current mystery series: "A Dickens of a Crime" and "the Journaling Mysteries." People were able to register, log in and listen, then interact with Heather.

Yarrow Library

Since all Fraser Valley Regional Locations opened in early August the Yarrow Library has provided both Express Checkout and In-Library Service.

Yarrow Library received a generous cash donation of \$25,000 from Envision Financial in October. The FVRL Food for Fines initiative was a perfect way to give back and help support Envision’s Full Cupboard program (a community program that raises food for local food banks). Donations made through Food for Fines will go back to Envision to distribute to those in need through this program.



I Spy Christmas activity

Through the holiday season, the library hosted two passive programs for children and their families. An “I Spy” Christmas activity sheet was available for children to complete in the library or take home and return to the library to be entered into a Christmas contest to win two \$25 gift cards to The Bookman.

The Yarrow Library also have three little elves who have joined staff this year. Each Elf, Cherry, Sam, & Lolli, hide around the library and library visitors are encouraged to find one or all three Elves to receive a “non-spicy” candy cane treat.



Elf on the Shelf

