

Operations Department



The Operations Department is responsible for the operations and maintenance of the City's water, sanitary sewer, storm drainage, road and dyke infrastructure, as well as the operation and maintenance of the Wastewater Treatment Plant (WWTP), over 100 parks and sports fields and the City's recreational trail network.

Second Quarter Report 2018

1945 Vedder Bridge Concrete Abutment and Viewing Area



As part of the Vedder Rotary Trail connection on the north side of the river, the existing bridge abutment from the previous Vedder Bridge was retained as a viewing area off of the Vedder Rotary Trail. Interpretative information about the history of the Vedder River crossing was established in this area, highlighting each of the previous bridges to span the crossing.

Local First Nations created an interpretive board and selected the Halq'eméylem word "Ts'elxwéyeqw" to represent the traditional territory of the Ts'elxwéyeqw Tribe whose villages were around the area now referred to as the Chilliwack River Valley and where the new Vedder bridge was constructed.

The refurbished 1945 bridge railing sections were installed to create the railing and provide support for the signage on the abutment.

Vedder Rotary Trail Wayfinding Signage

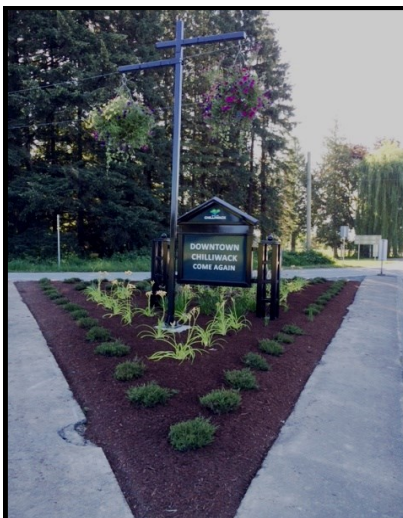


The Vedder Rotary Trail has become a popular destination for local residents and visitors alike. To assist trail users with their visit, wayfinding items such as kiosks with maps and kilometre markers have been added at strategic points along the trail.

To achieve the goal of looping the Vedder Rotary Trail, a variety of wayfinding signage will be required. Operations have begun the installation of informative, yet beautiful blade style wayfinding signage near the Vedder Bridge.

Welcome Signage for Downtown

Operations has strategically installed three gateway signs for downtown Chilliwack in order to supplement the two 'Welcome to Chilliwack' signs along Highway 1 and the existing downtown gateway signs. These signs welcome visitors from the north to the downtown on Young Road at Prairie Central and Ashwell Road at Hodgins Avenue, and from the west on Wolfe Road at Townsend Park.



Neighbourhood Playground Upgrades

The City has in place an annual program to reinstall up to date equipment in all parks where old equipment was previously removed due to non-compliance with CSA Standards. During the second quarter of 2018 both Mitchell Park and Hilton Park received play structure replacements and site work.

The community consultation process for play structure replacement includes the delivery of a letter and accompanying design proposal to residences within walking distance of the park in question. The letter invites comments from residents by email or phone and further invites them to a meeting with Parks Operations staff in the park to discuss proposed plans. Once all comments are reviewed and reasonable changes are made to the proposal, an updated package is sent out to the community for confirmation.



Mitchell Park

Mitchell Park received a variety of equipment to provide play opportunities for kids of all ages. The new gravel pathway will be paved to allow for ease of mobility and all-wheel play (scooters, tricycles and other) in the park.

Hilton Park received a new play structure with different types of climbing apparatus and slides at different heights to challenge the user. The new existing gravel walkway will be paved for accessibility.



Hilton Park

Neighbourhood Playground Upgrade Continued



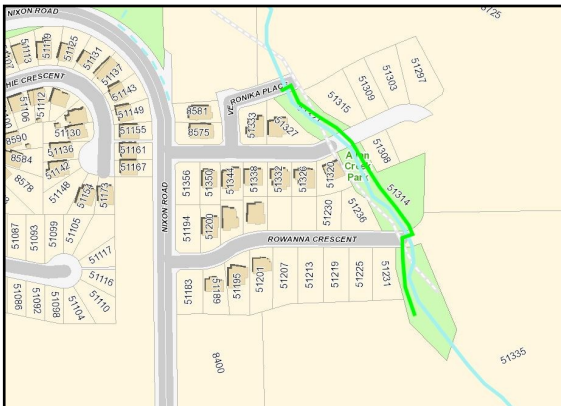
Bonny Park

Surrounded by residential lots on Bonny Avenue, Oak Street, Riverside Drive and Williams Street, this large neighbourhood park received playground upgrades in the spring of 2018.

Redevelopment in this neighbourhood created the need for higher service levels in this park to accommodate the additional families in the area. In 2017, staff consulted with the neighbourhood and developed a plan for the park, including the installation of additional play structures. This spring, Parks Operations installed a variety of spinning and bouncing play toys to complement the existing slide and swing set.

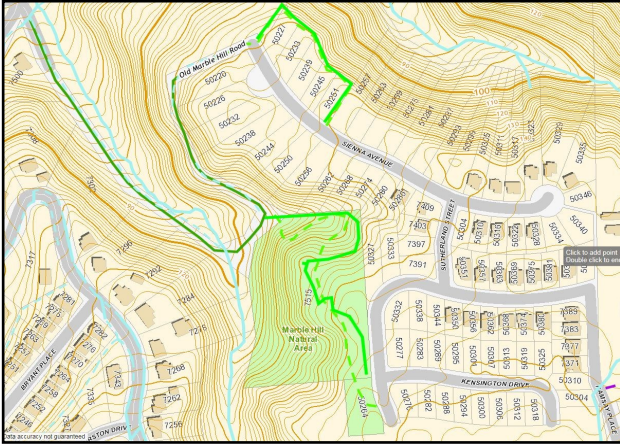
Allan Creek Trail Completion

The recently completed Allan Creek Trail extends 200 metres from Veronika Place to above Rowanna Crescent within Allan Creek Park. As the trail will eventually connect Nixon Road Park to Forest Gate Park, a temporary bridge crossing has been installed to facilitate its use by local residents. The trail starts at Veronika Place where it follows the east bank of Allan Creek, crossing Rowanna Crescent twice to the west bank of the creek, then uphill to a developing area.



Kensington Trail

The Kensington Trail connects Old Marble Hill Road to Kensington Park with a moderately steep 360 metre trail passing through the Marble Hill Natural Area. The trail completes a loop route, already in use by local residents. Starting at Kensington Park, the trail descends 100 metres to Old Marble Hill Road, back uphill to a short section of trail adjacent to Sienna Drive, and then by sidewalk back to Kensington Park, which is scheduled to be developed next year with playground equipment.



Street Tree Inventory Expansion and Living Snow Fences



Chilliwack's tree canopy was expanded this spring, as Operations staff planted over three hundred trees throughout the City along streets and within parks. Trees produce oxygen, intercept airborne particulates, reduce smog and are beautiful additions to local streetscapes.



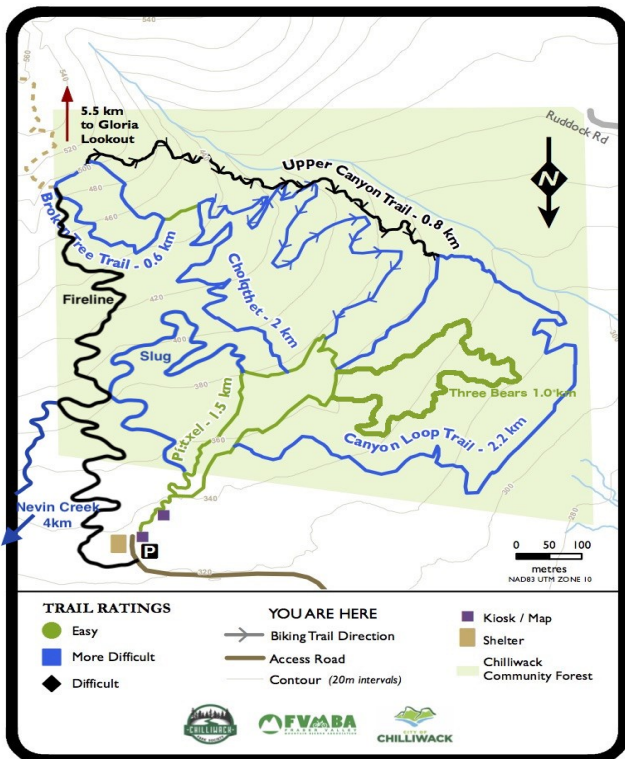
Operations staff installed the first "living snow fence" along Sheffield Way this spring. A living snow fence is a barrier of plants, shrubs and/or trees to reduce blowing snow and prevent drifting in the winter. Crews planted 330 yews to create the snow fence, protecting 300 metres of roadway from future drifting snow.

Planting trees and shrubs as a living snow fence is more attractive, more environmentally-friendly and more economical than repeatedly installing and taking down traditional orange snow fencing.

BC Wildfire Service Practices in Community Forest

During the spring the City received a request from the BC Wildfire Service to have a group of firefighters come into the Community Forest and practice their chainsaw and tree assessment skills. They explained that the training work would be put to good use as they would be able to use the training exercise to build a trail.

Operations co-ordinated the work and after two 10 hour training days a group of 10 wildfire service fire fighters had constructed over a kilometre of new trail. This trail link has now been officially opened and has been named the “Fireline Trail”. This new trail brings the total length of trails in the Community Forest to over 9.57km.



City Staff Complete Electrical Control Upgrades

The City of Chilliwack's drainage station located on Schweyey Road, has recently gone through an electrical control upgrade. This facility hosts 3 - 350 horse power pumps that draw water from the Chilliwack Creek primarily during the freshet with each capable of pumping 48,000 gallons per minute.

The recent upgrades consisted of a new river level monitoring device and a complete control panel replacement. These changes provide several operational benefits and will ensure continual effective drainage and flood control. All work completed on this project was accomplished by City staff.

