

Operations Department



The Operations Department is responsible for the operations and maintenance of the City's water, sanitary sewer, storm drainage, road and dyke infrastructure, as well as the operation and maintenance of the Wastewater Treatment Plant (WWTP), over 100 parks and sports fields and the City's recreational trail network.

First Quarter Report 2018

VEDDER PARK

Vedder Park is nestled along the Legacy Trail at the eastern end of the Vedder Rotary Trail. The park's gravel parking lot has been paved and it now boasts 175 paved parking stalls and upgraded pedestrian pathways for easy access to the Vedder Rotary Trail and many other amenities. New to the park are an expanded off-leash dog area and a large playground complete with two separate play zones for kids of all ages. Both play zones feature a simple nature theme to reflect the Vedder River. The playground for ages 2-5 features creatures like Lola the Snail Spring Rider and Scarlet the Ladybug, and the playground for older youth features a large climbing boulder. Additional new features include permanent washroom facilities, outdoor exercise equipment (green gym) and a new food truck parking and retail area. A locally owned and operated food truck now has a vending permit for this park and will be operating 6 days a week adding to the vibrancy of the park experience.

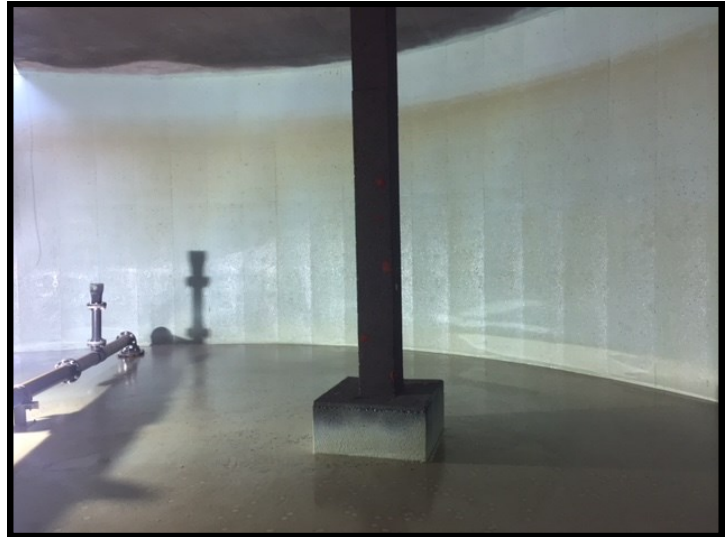
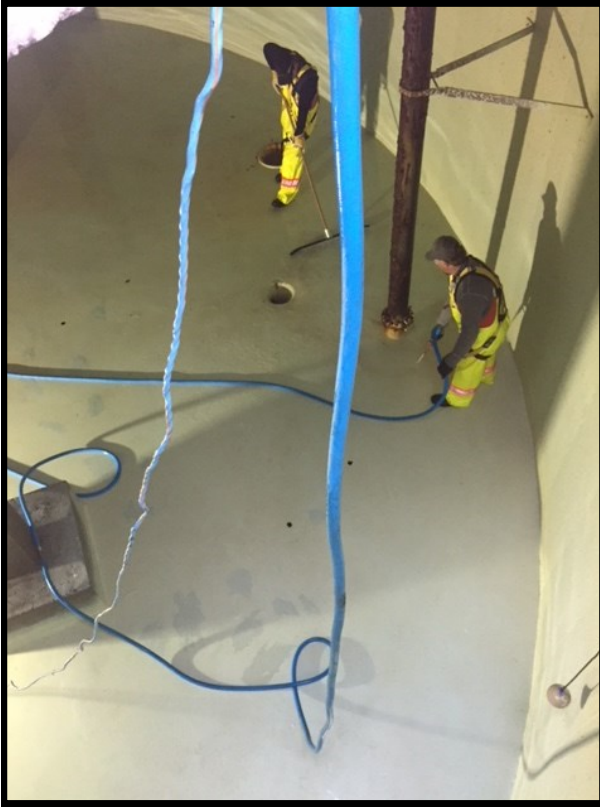


PEACH PARK

Located at the south end of Peach Road, Peach Park is another strategic access point and recreational node along the Vedder Rotary Trail. Upgrades to this park include a renovated, paved parking lot, permanent washroom facilities, a picnic area and a brand new playground for all ages.



ANNUAL RESERVOIR CLEANING SUCCESSFUL



The City's water distribution system includes 18 strategically placed reservoirs, located in hillside areas such as Mt Shannon, Chilliwack Mountain, Promontory & Marble Hill. Reservoir tank capacities range from 250,000 litres to 19,000,000 litres, constructed out of both concrete and steel. Cleaning procedures are carried out annually on one third of the sites to not only maintain water quality but to also perform internal inspections on the structural materials. Each of the reservoirs are equipped with various styles of mixing systems to promote turn over and lower water temperatures. This spring the Operations Department completed the annual reservoir cleaning project at all reservoirs in the Chilliwack Mountain area. Although the reservoir tanks must be completely emptied for cleaning, inspection staff were able to clean the tanks whilst avoiding any disruption to customer service by utilizing the system of water booster pumps on Chilliwack Mountain. No structural defects were noted on any of the tanks and all were returned to service with minimal delay.