



Evans Connector Project Contract Details

The City of Chilliwack has entered into a contract for the design and construction of the Evans Road Connector Project with the team of Marten's Asphalt Ltd and McElhanney Engineering Services Ltd in the amount of \$38.2 million. The construction schedule anticipates work starting in late July 2008 with completion early in 2010.

The City has completed the land purchases necessary for the construction, including the 2.5 hectare easement agreement with Squiala First Nations, allowing the road linkage to Ashwell Road.

Through negotiations with the Federal Department of Fisheries and Oceans, the City has secured approval to construct the two necessary bridge crossings of the Chilliwack River and Chilliwack River Diversion. Work in these two fish bearing streams will be limited to the late summer fish windows.

During the construction of the project, some necessary road closures (photo above) will disrupt traffic patterns. Due to the extensive foundation works required, Evans Road and Luckakuck Way will be closed to through traffic during construction. Signs indicating closure will be posted prior to this event.

Project Partners

Canada



More Information:

This project will result in long term changes to commuting and traffic patterns. A simplified route plan and other information is posted on the City website at www.chilliwack.com/evans and will be updated regularly. If you still have questions about the project, please contact Engineering at City Hall at 604-793-2907.

Evans Interchange / Connector Project

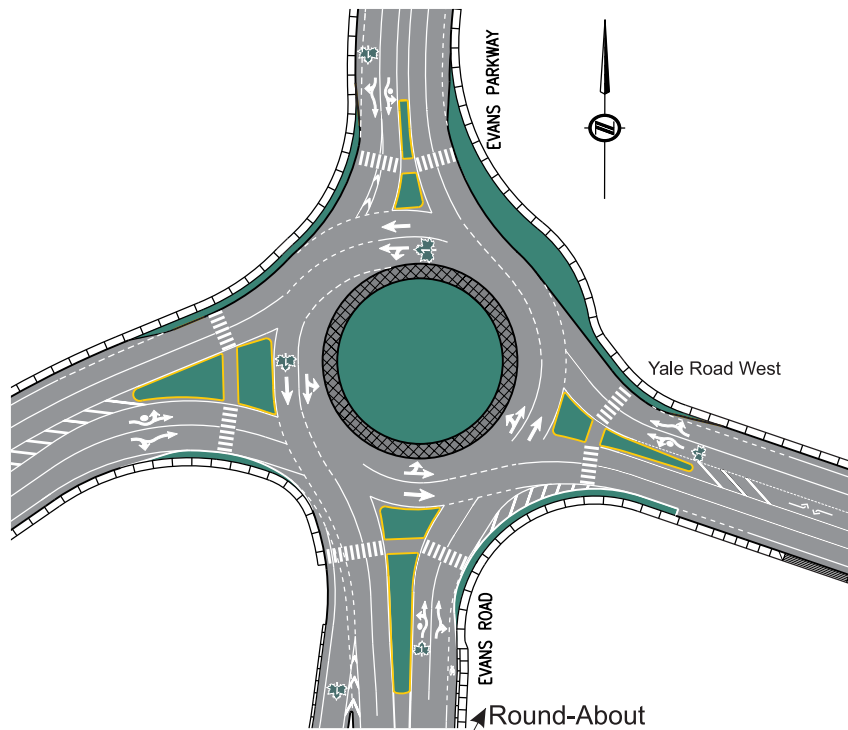


Summer 2008!

- Project Update -

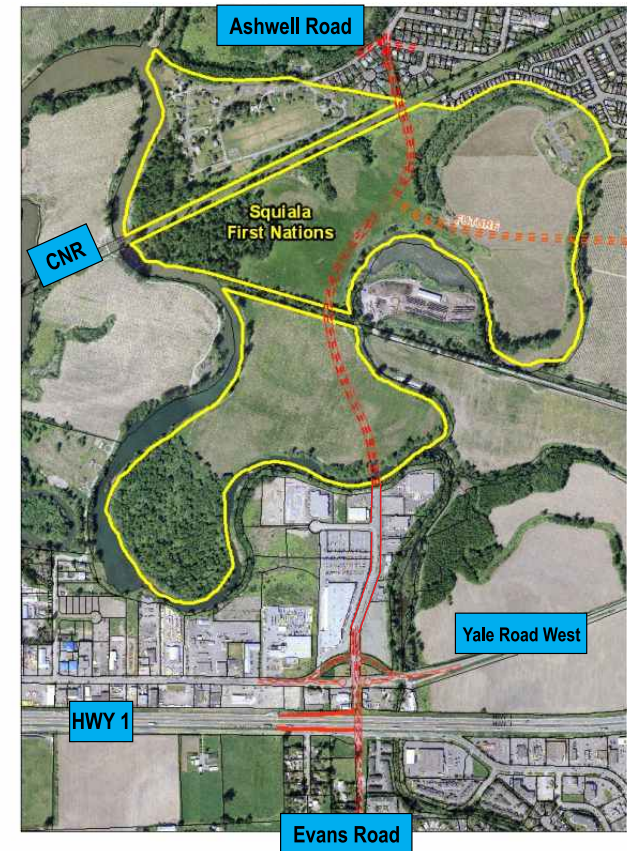
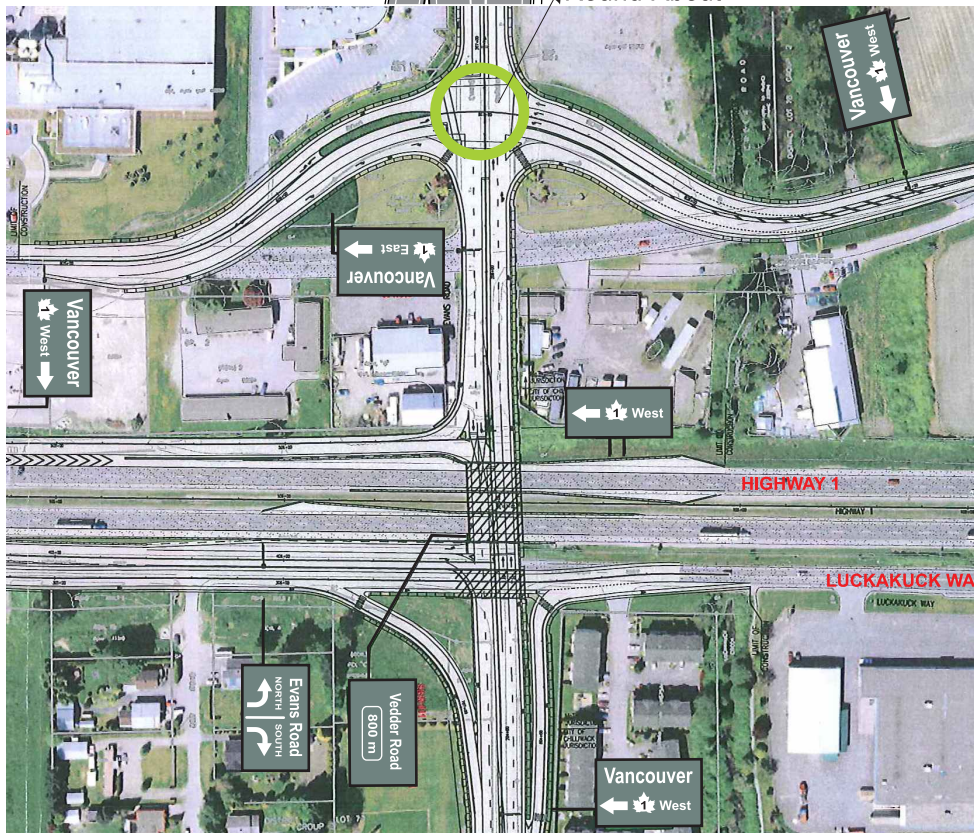
Round-About Inclusion

The City and the Ministry of Transportation have approved the inclusion of a modern urban round-about for the new intersection of Evans Road and Yale Road. The sketch to the right illustrates the preliminary design work for the round-about.



Interchange / Connector

The design drawing on the right, from the design-build team of Marten's Asphalt Ltd and McElhanney Consulting Services Ltd, illustrates the Trans Canada interchange and the Evans Road at Yale Road intersection.



Connector Route

The drawing above illustrates the proposed route for the connector road, with a maximum speed limit of 50 km/hr. Yale Road West will be realigned, with a small curve, and an intersection added at the interchange. Improvements to Ashwell Road in the short term will include left turn lanes at critical intersections. In the future, and if traffic volumes warrant, additional capital improvements will be programmed for Ashwell Road.

