

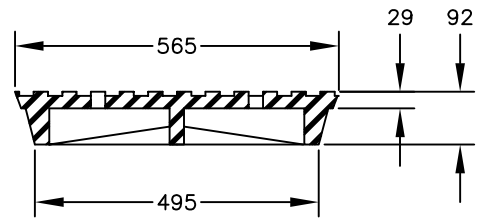
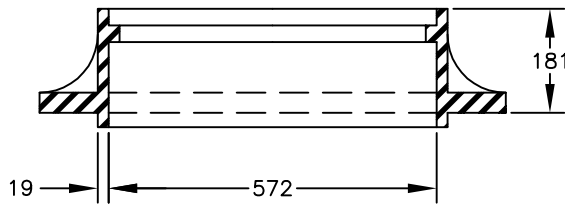
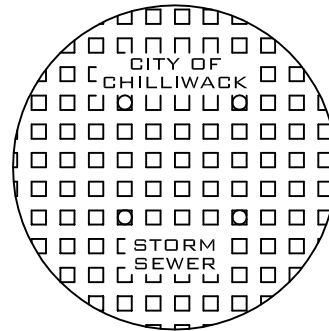
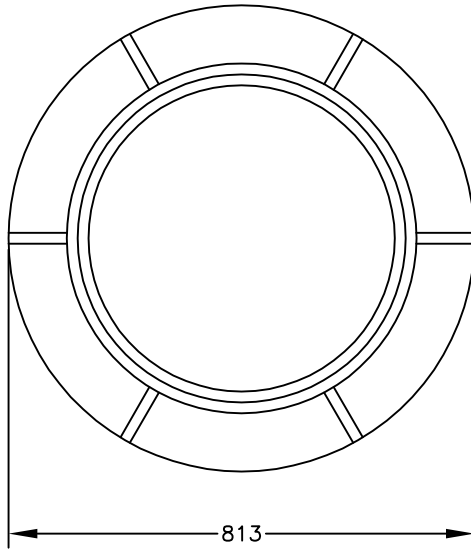
FRAME

84kg

— APPROXIMATE WEIGHT —

70kg

COVER



NOTES:

1. LETTERING SHALL BE 25mm FLATTENED FACE GOTHIC LETTERING WITH FACE OF LETTERS RAISED TO THE SAME LEVEL AS THE TOP OF THE RIBS.
2. BOTH FRAME AND COVER SHALL BE MACHINED FOR A NONROCKING FIT IN ALL POSITIONS.
3. ALTERNATES TO THE DOBNEY C-18 SHOWN ABOVE ARE ANY DIMENSIONALLY SIMILAR APPROVED COVER AND FRAME.

MANHOLE FRAME AND COVER



CITY OF CHILLIWACK

REVISED:

APPROVED:

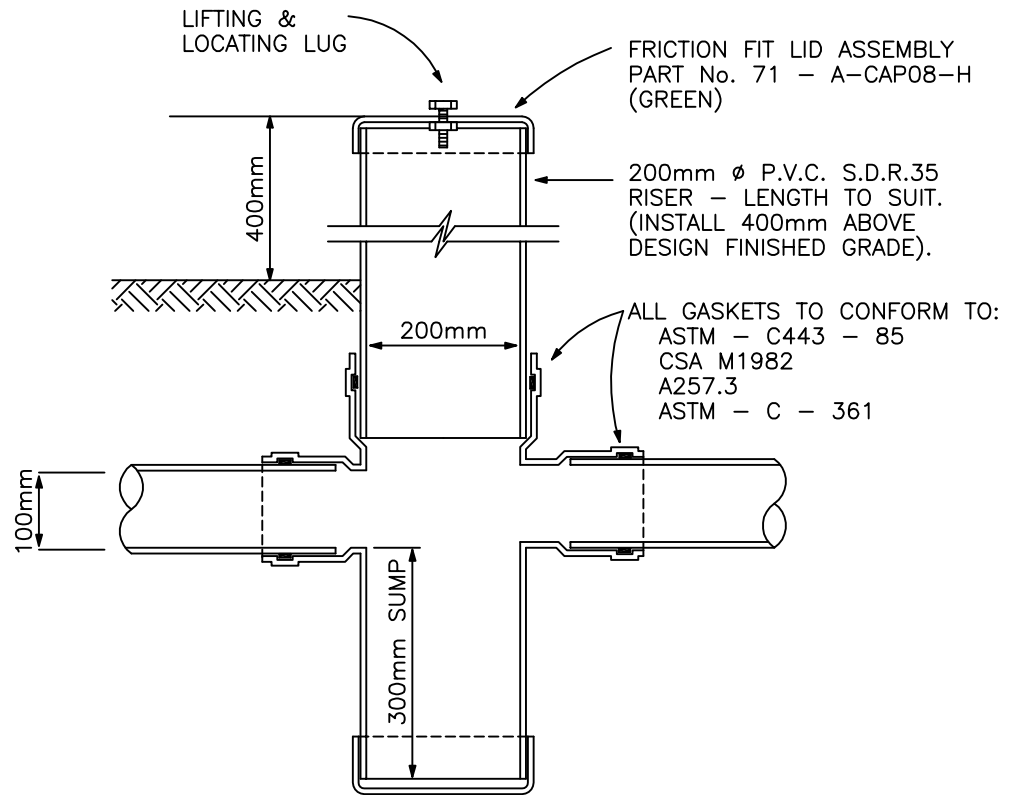
APPROVED:

DWG. NO.

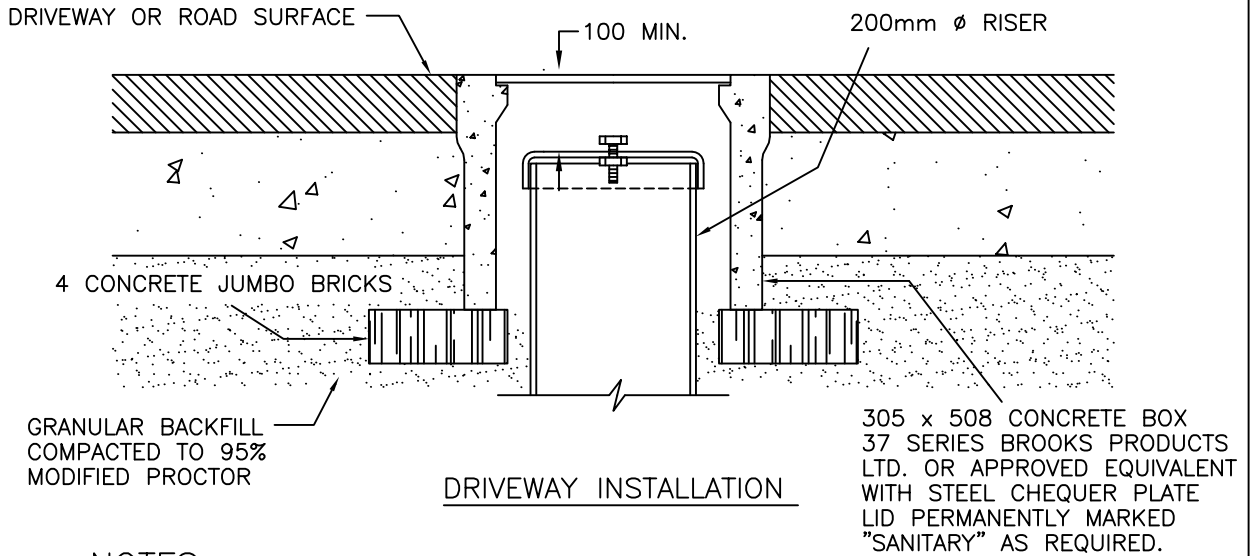
DATE: 05/03

DD-1

DRAWN: SEH



STANDARD INSTALLATION



DRIVEWAY INSTALLATION

NOTES:

1. INSPECTION CHAMBER LERON PLASTICS No. 70a - 4 LP (SINGLE)/70A - 44LP (DOUBLE) OR APPROVED EQUAL.
2. MINIMUM DEPTH 1.0m FROM DESIGNED FINAL GRADE.
3. MAXIMUM DEPTH 1.2m FROM DESIGNED FINAL GRADE.

INSPECTION CHAMBER FOR 100mm
STORM SEWER CONNECTION



CITY OF
CHILLIWACK

A 07/93

REVISED:

APPROVED:

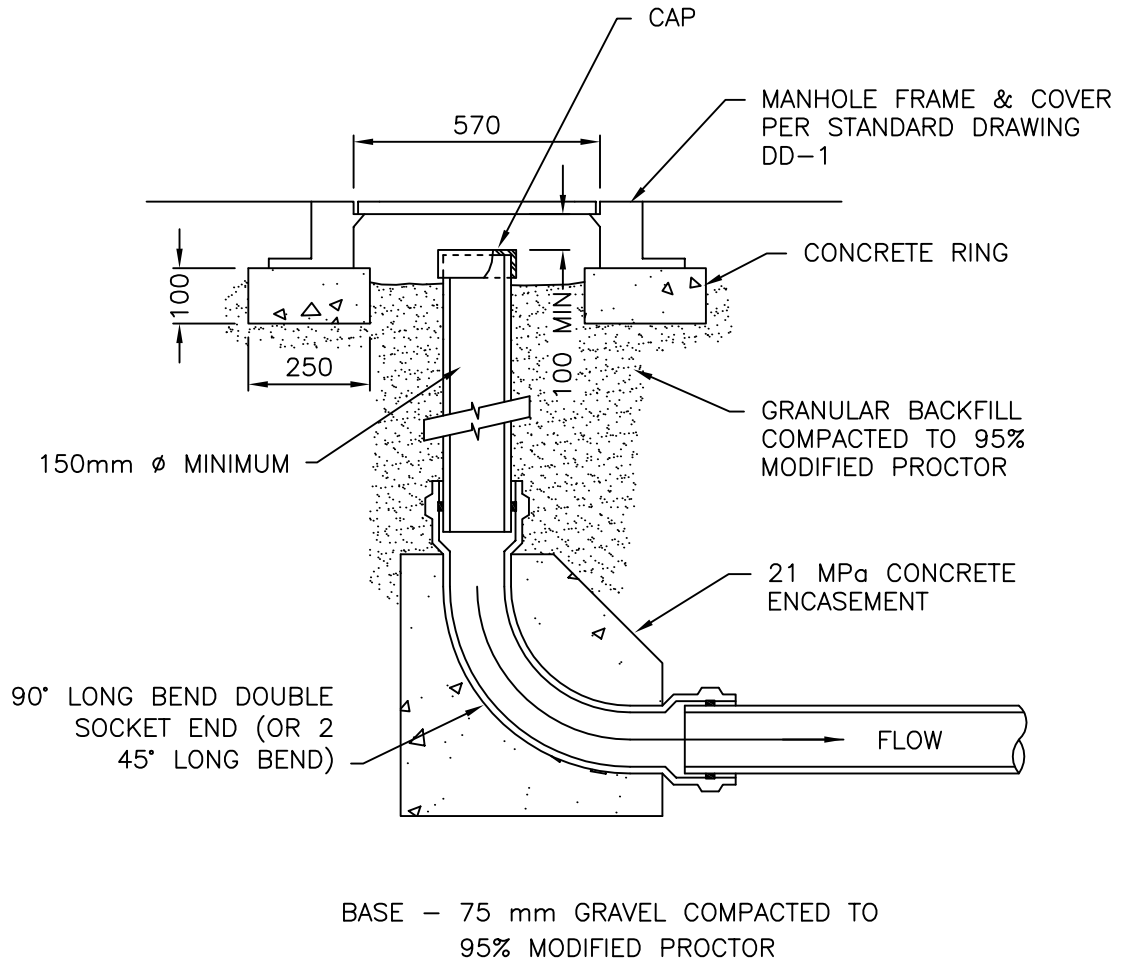
APPROVED:

DWG. NO.

DATE: 07/93

DD-2

DRAWN: SEH



1. MAXIMUM DEPTH 2.0 m
2. MINIMUM DEPTH 1.0 m
3. APPLICABLE ONLY FOR STORM TERMINAL LINES, TEMPORARY USE ONLY

STORM SEWER CLEANOUT (TEMPORARY)



REVISED:

APPROVED:

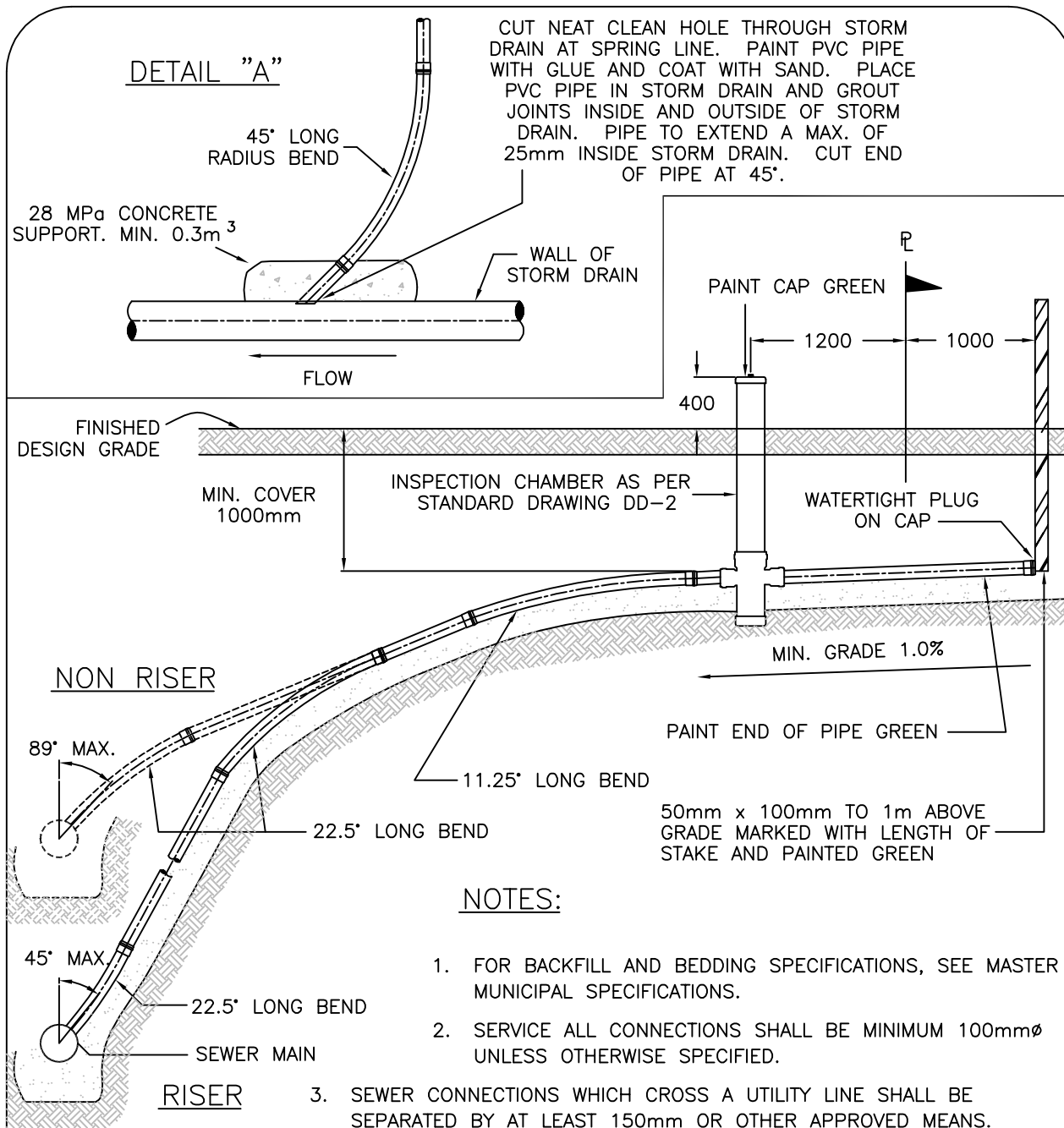
APPROVED:

DWG. NO.

DATE:

DD-3

DRAWN:



NOTES:

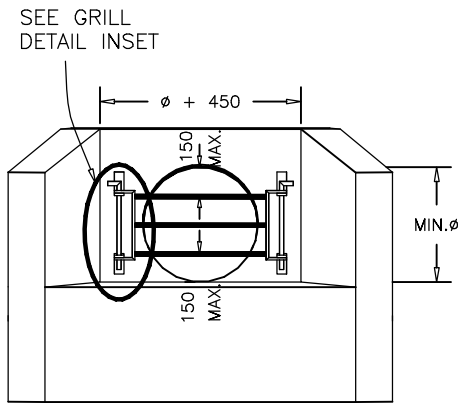
1. FOR BACKFILL AND BEDDING SPECIFICATIONS, SEE MASTER MUNICIPAL SPECIFICATIONS.
2. SERVICE ALL CONNECTIONS SHALL BE MINIMUM 100mm ϕ UNLESS OTHERWISE SPECIFIED.
3. SEWER CONNECTIONS WHICH CROSS A UTILITY LINE SHALL BE SEPARATED BY AT LEAST 150mm OR OTHER APPROVED MEANS.
4. RISER TYPE SERVICE TO BE USED ONLY WHERE SERVICE IS GREATER THAN 2.5m ABOVE THE WYE INVERT OR WHERE APPROVED BY THE ENGINEER.
5. MANUFACTURED WYES SHALL BE USED ON LINES LESS THAN 450mm ϕ . ON MAINS 450mm ϕ AND GREATER, CONNECTION SHALL BE AS SHOWN ON DETAIL 'A' ABOVE. (THE BELL PIECE SHALL NOT PROTRUDE INTO THE BARREL OF THE PIPE.)
6. IN ALL URBAN AREAS WITH NEW CONCRETE CURB & GUTTER, THE LOCATION OF THE STORM SEWER SERVICE SHALL BE CLEARLY IDENTIFIED WITH THE LETTER 'D' ON THE FACE OF THE CURBING. THE LETTER IS TO BE 50mm HIGH PERMANENTLY AND CLEARLY CAST INTO THE CONCRETE AT TIME OF POURING. IN AREAS OF EXISTING CONCRETE CURBING, THE SERVICE LOCATION SHALL BE IDENTIFIED WITH A 6mm DEEP SAW CUT PAINTED GREEN ON THE TOP FACE OF THE EXISTING CURB.

STORM SEWER SERVICE CONNECTION

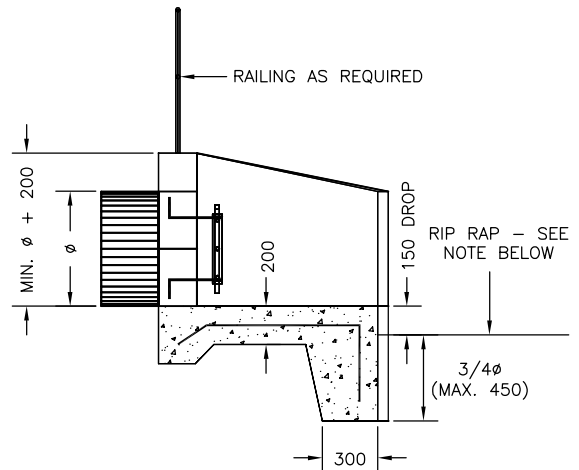


CITY OF CHILLIWACK

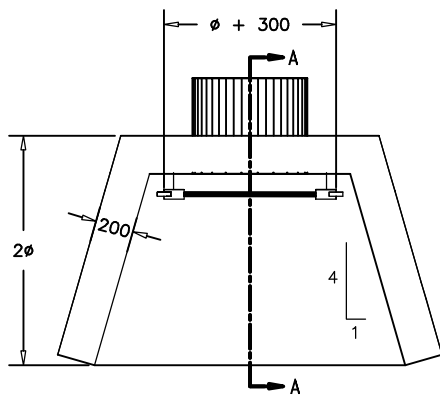
REVISED: 05/08	APPROVED:
APPROVED:	DWG. NO.
DATE: 06/94	DD-4
DRAWN: SEH	



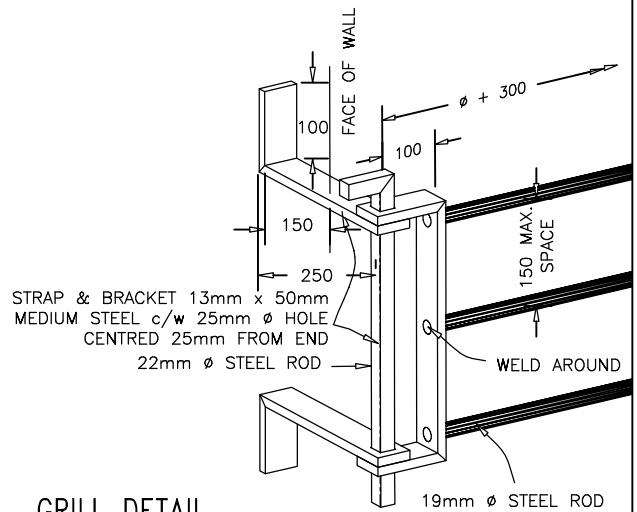
ELEVATION



SECTION A-A



PLAN



GRILL DETAIL

NOTES:

1. RIP RAP SUITABLY SIZED OR GABIONS c/w FILTER BED SHALL BE PLACED ON BOTTOM AND SIDES TO DESIGN WATER LEVEL AND DOWNSTREAM DISTANCE OF 1.5 TIMES THE DESIGN WATER VELOCITY (MINIMUM 1m).
2. PIPE SIZES LARGER THAN 1050mm ϕ , WATER VELOCITIES GREATER THAN 2.13m/sec OR WALLS HIGHER THAN 2m SHALL REQUIRE A SPECIAL DESIGN FOR THE STRUCTURE.
3. REBAR 10m AT 200mm BOTH WAYS AND CENTRED PLUS ONE 10m AROUND PIPE.
4. REBARS TO HAVE MINIMUM 50mm COVER.
5. CONCRETE TO BE 21MPa AT 28 DAYS.
6. CHAMFER ALL EXPOSED CORNERS 25mm.
7. PLACE SUFFICIENT GRANULAR BACKFILL FOR DRAINAGE.
8. GRILLAGE NOT REQUIRED ON PIPE LESS THAN 600mm ϕ .
9. ALL GRILLAGE MATERIALS TO BE GALVANIZED.

OUTLET STRUCTURE



REVISED:

APPROVED:

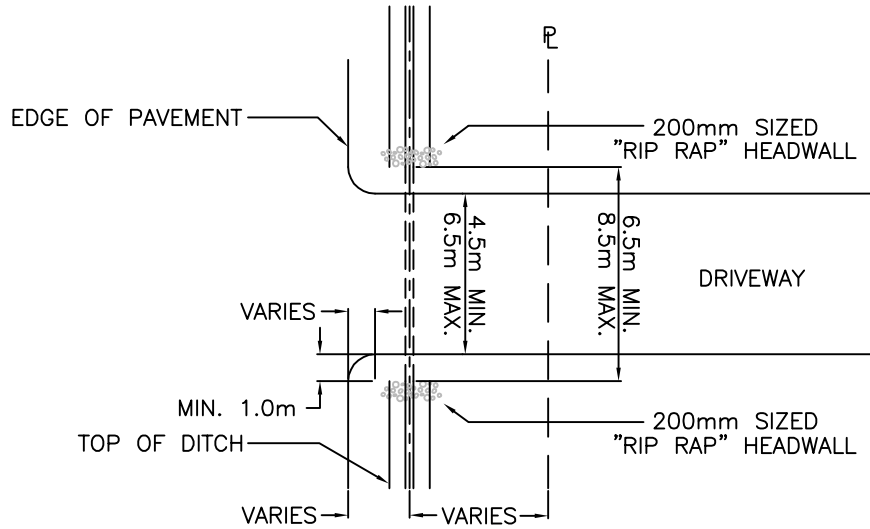
APPROVED:

DWG. NO.

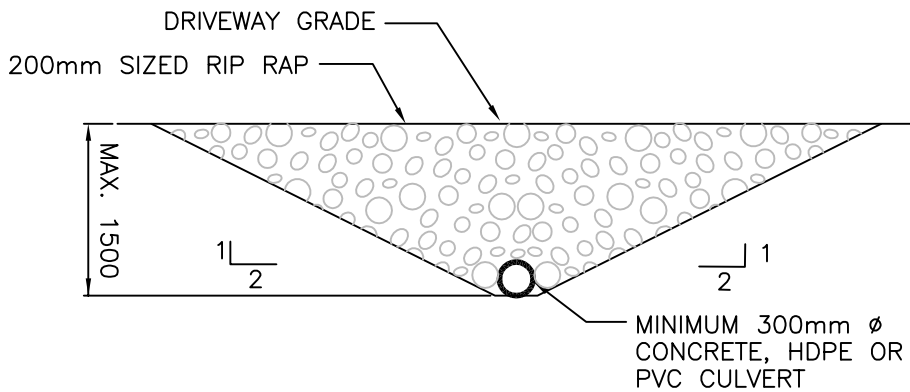
DATE: 05/03

DD-5

DRAWN: SEH



PLAN



PROFILE

NOTES:

1. FILL BETWEEN ENDWALLS TO BE IMPORTED GRANULAR BACKFILL OR APPROVED NATIVE BACKFILL WITH A 150mm MINIMUM THICK GRANULAR BASE SURFACE FINISH.
2. SPIGOT END OF PIPE (WHERE APPLICABLE) TO FACE DOWNSTREAM AND TO BE CLEAR OF ENDWALLS.
3. ENDWALLS MAY BE CAST IN PLACE USING 20 MPa CONCRETE WITH REINFORCING OF 10M @200 BOTH WAYS.
4. REFER TO CONTRACT DRAWINGS FOR SITE SPECIFIC DIMENSIONS, THE LAND DEVELOPMENT BYLAW 2010 No. 3700 AND MMCD SECTION 033053, 034001, 334213 FOR DETAILED SPECIFICATIONS.

DRIVEWAY CULVERT WITH BULKHEADS



CITY OF CHILLIWACK

REVISED: 10/10

APPROVED: RS

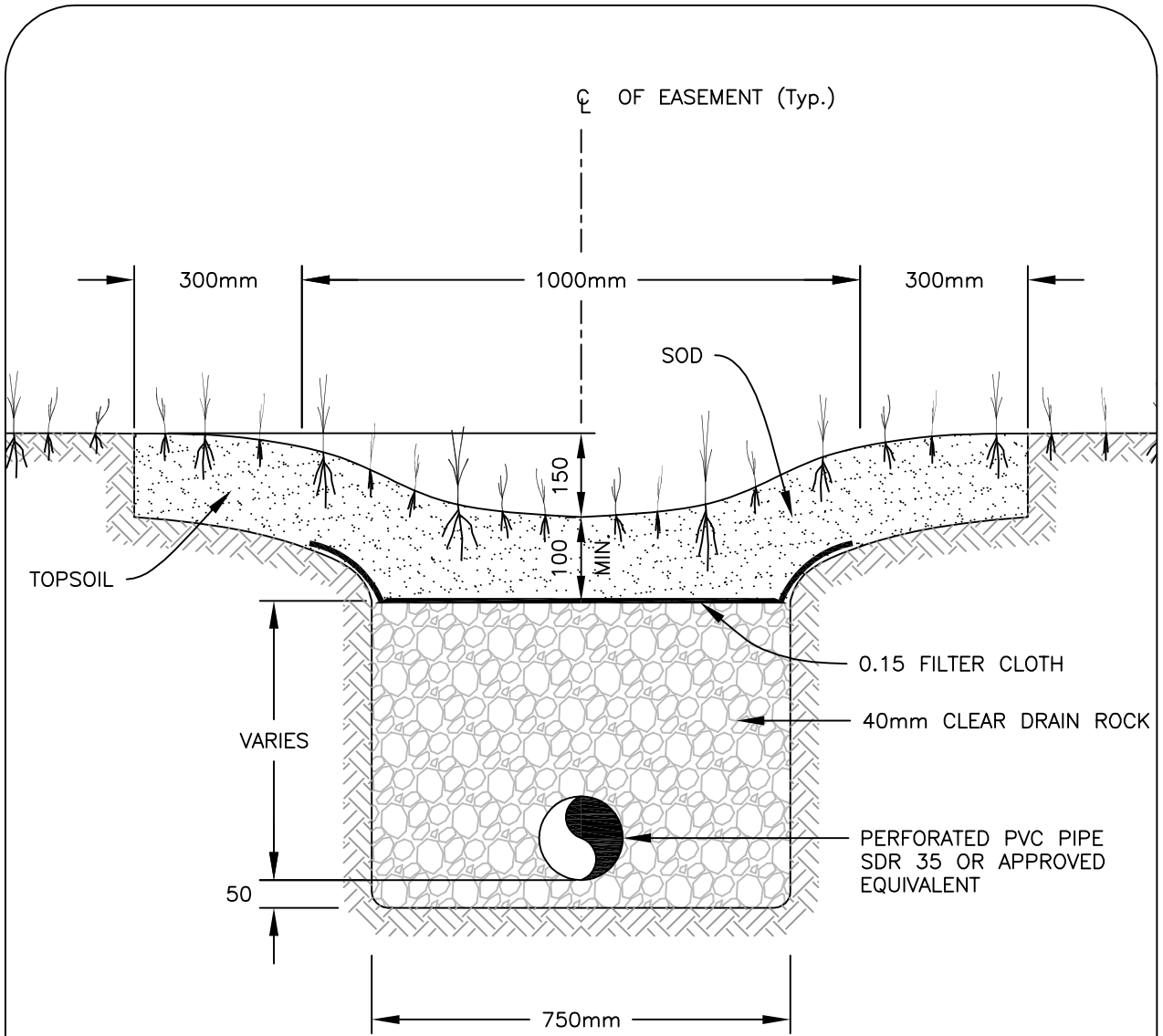
APPROVED:

DWG. NO.

DATE: 06/94

DD-6

DRAWN: SEH



NOTES:

1. SWALE TO BE CENTRED ON 3.0m EASEMENT.
2. SOD TO BE PLACED ON MINIMUM 100mm TOPSOIL.

FRENCH DRAIN



CITY OF CHILLIWACK

REVISED:

APPROVED:

APPROVED:

DWG. NO.

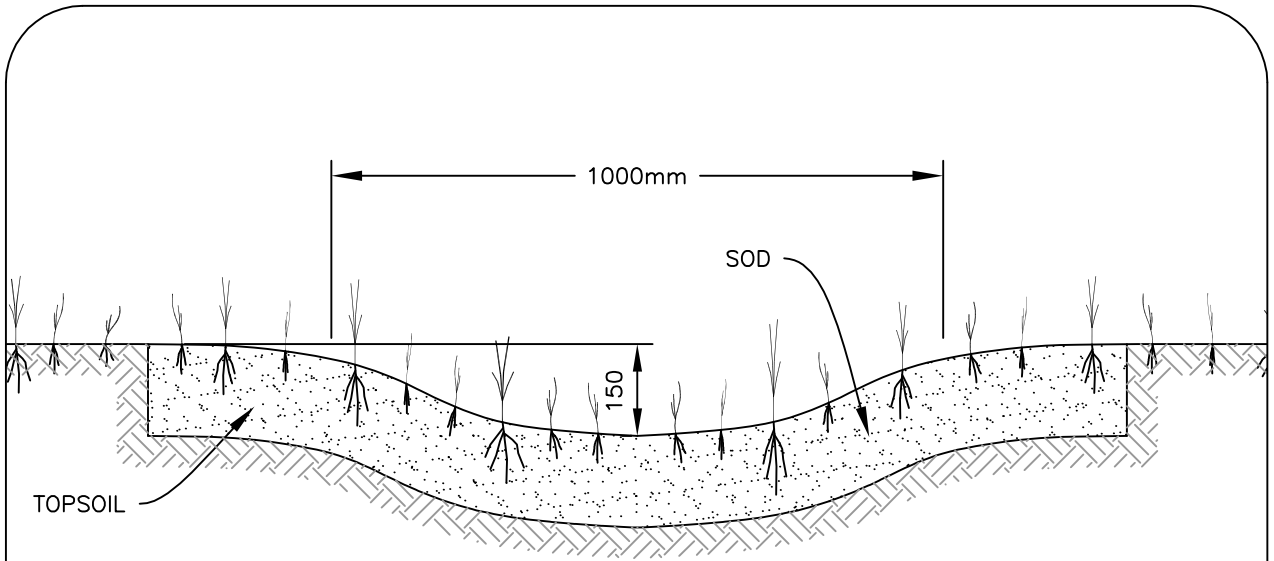
DATE:

05/03

DD-7

DRAWN:

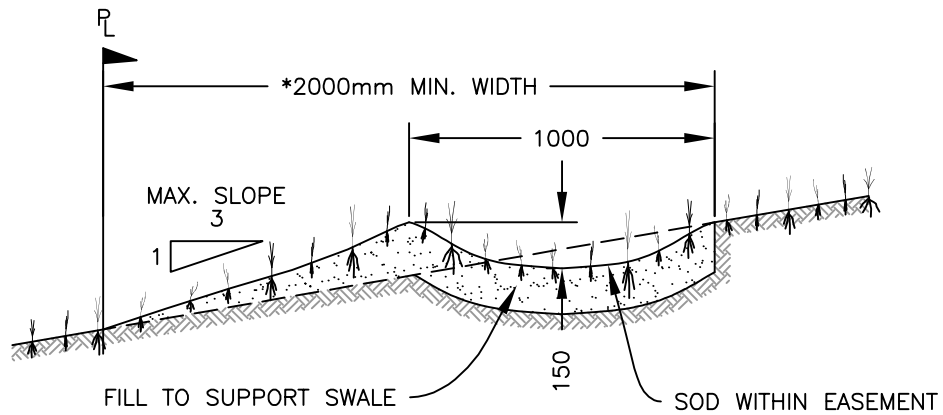
SEH



TYPE "A"

NOTES:

1. SWALE TYPICALLY CENTRED ON 3.0m EASEMENT.
2. SOD TO BE PLACED ON MIN. 100mm TOPSOIL.



TYPE "B"

NOTE:

- * 1. EASEMENT WIDTH AS REQUIRED TO SUPPORT PROPOSED SWALE.

SWALE



CITY OF CHILLIWACK

REVISED:

APPROVED:

APPROVED:

DWG. NO.

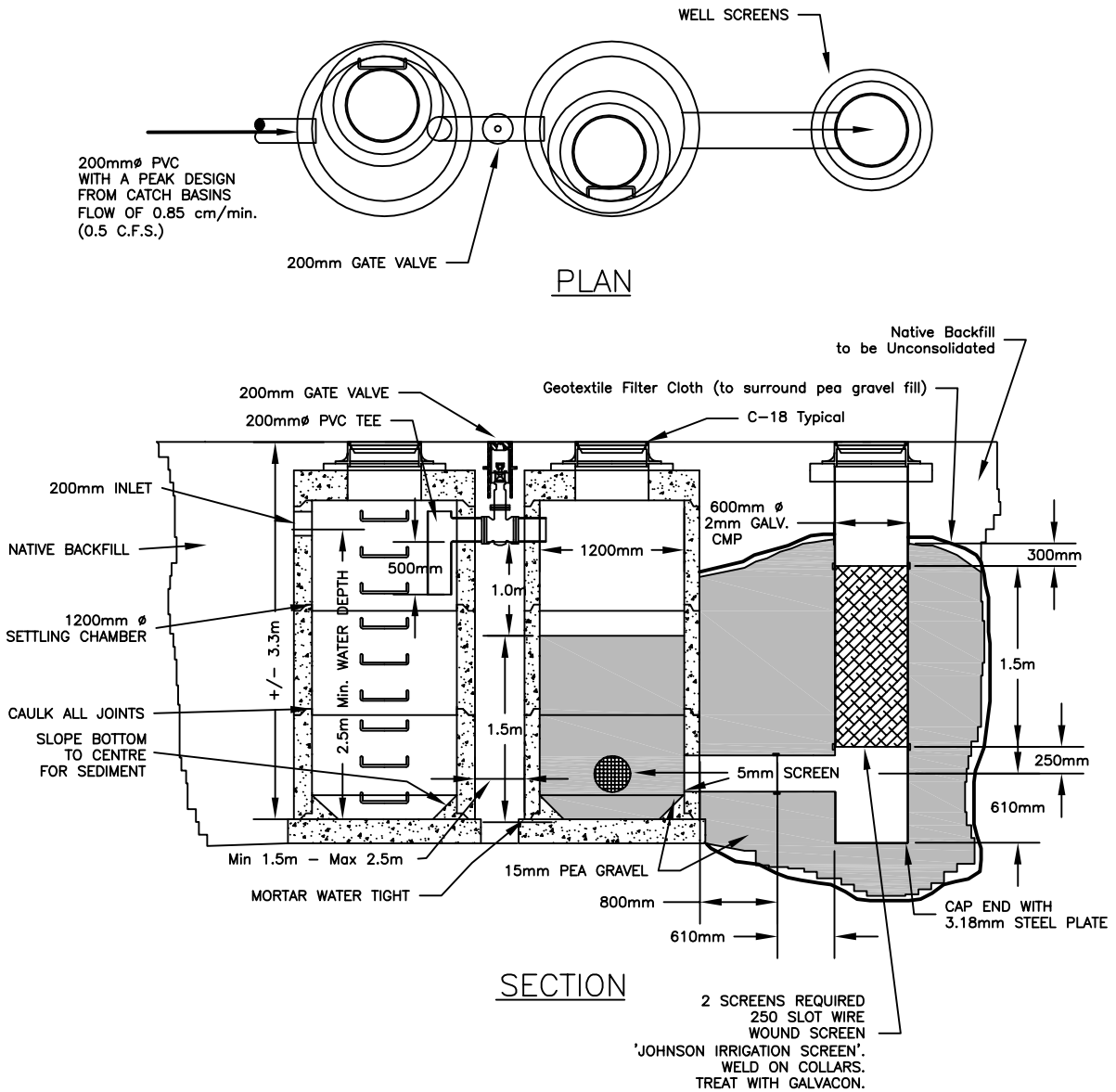
DATE:

05/03

DD-8

DRAWN:

SEH



SOAK-AWAY WELL 0.5 C.F.S.

REVISED: 02/10

APPROVED:

APPROVED:

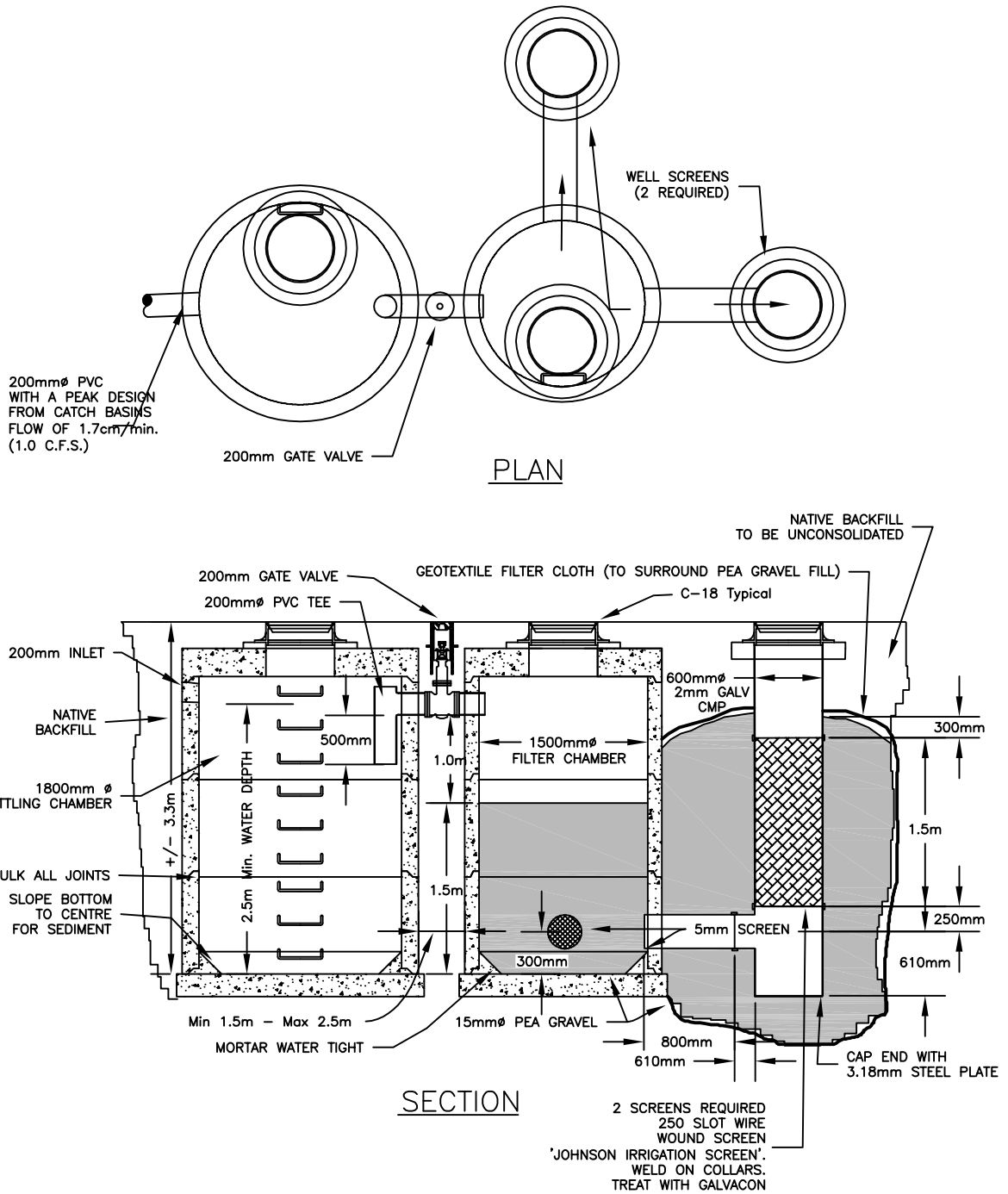
DWG. NO.

DATE: 02/99

DD-9

DRAWN: JWW





SOAK-AWAY WELL 1.0 C.F.S.

REVISED: 02/10

APPROVED:

APPROVED:

DWG. NO.

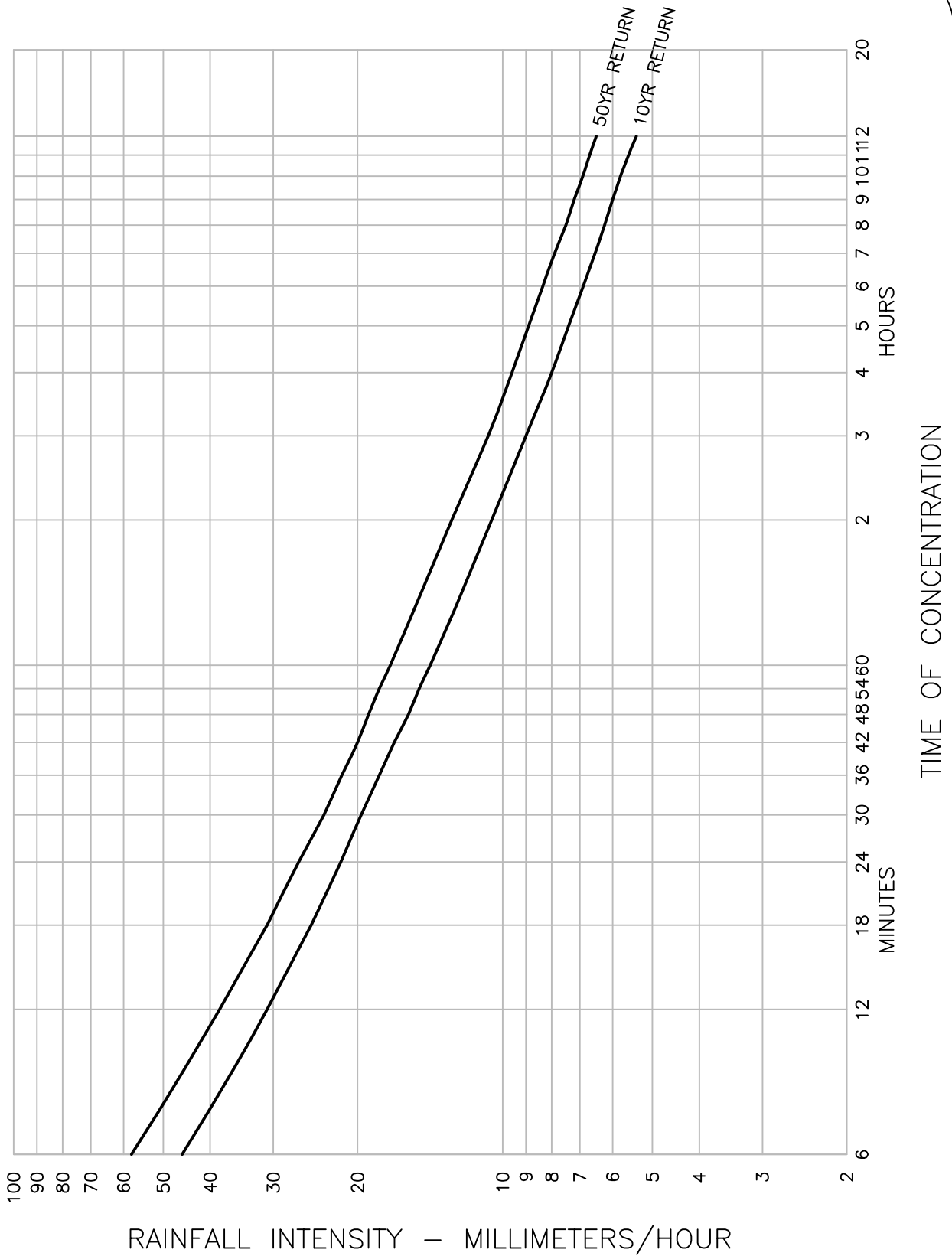
DATE: 02/99

DD-10

DRAWN: JWW



CITY OF
CHILLIWACK

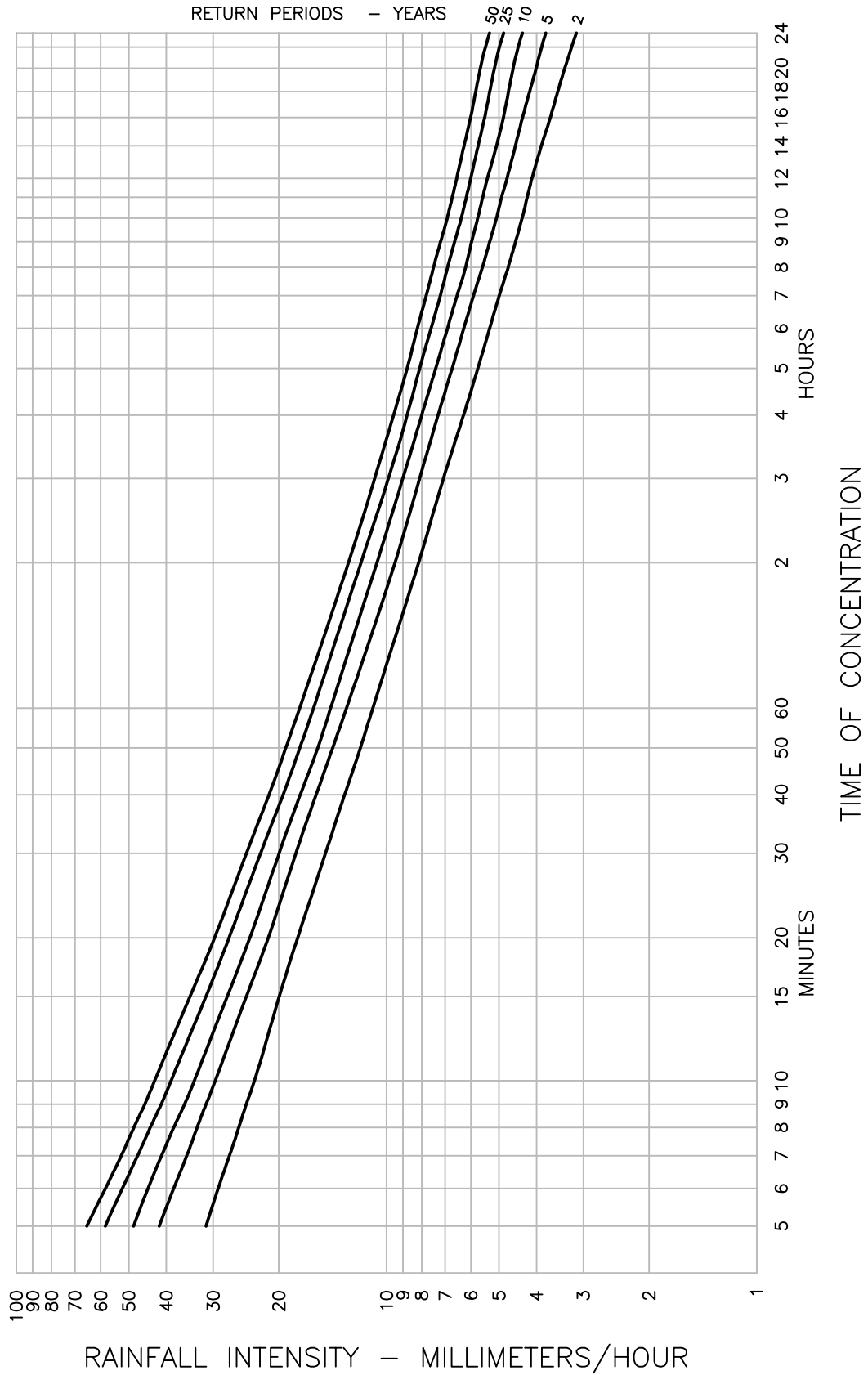


SARDIS-VEDDER (SOUTH OF TRANS CANADA HIGHWAY)
 RAINFALL DURATION - INTENSITY CURVE



CITY OF CHILLIWACK

REVISED:	APPROVED:
APPROVED:	DWG. NO.
DATE: 05/03	DD-11
DRAWN: SEH	

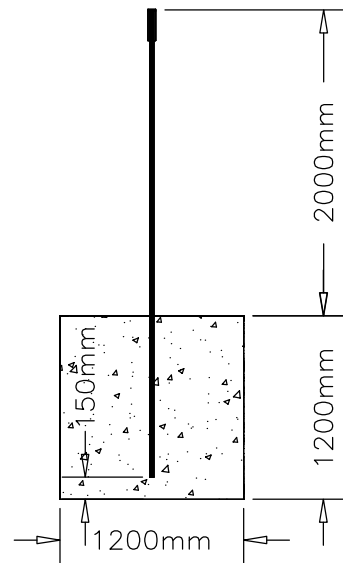
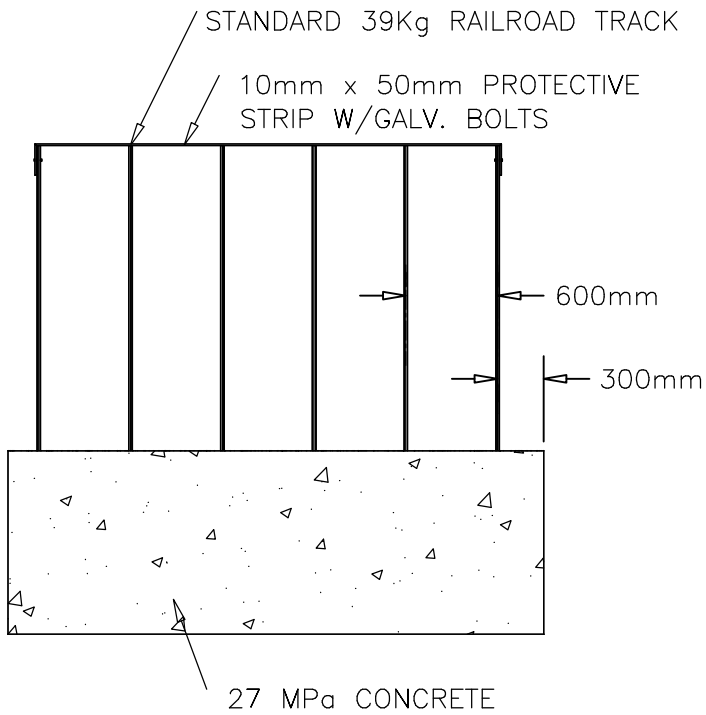
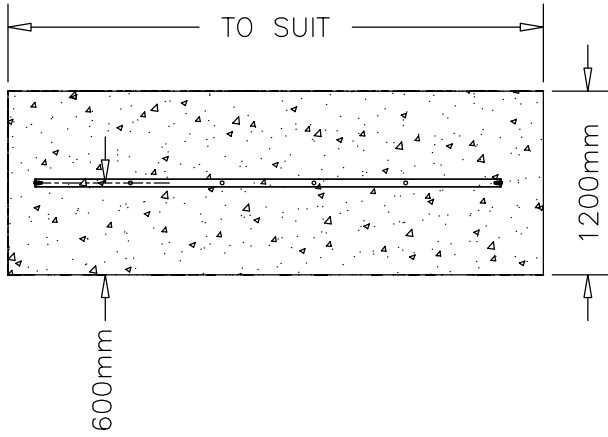


AGASSIZ (NORTH OF TRANS CANADA HIGHWAY)
RAINFALL DURATION - INTENSITY CURVE



CITY OF CHILLIWACK

REVISED:	APPROVED:
APPROVED:	DWG. NO.
DATE: 05/03	DD-12
DRAWN: SEH	



TRASH RACK - TYPE 'A'



CITY OF CHILLIWACK

REVISED:

APPROVED:

APPROVED:

DWG. NO.

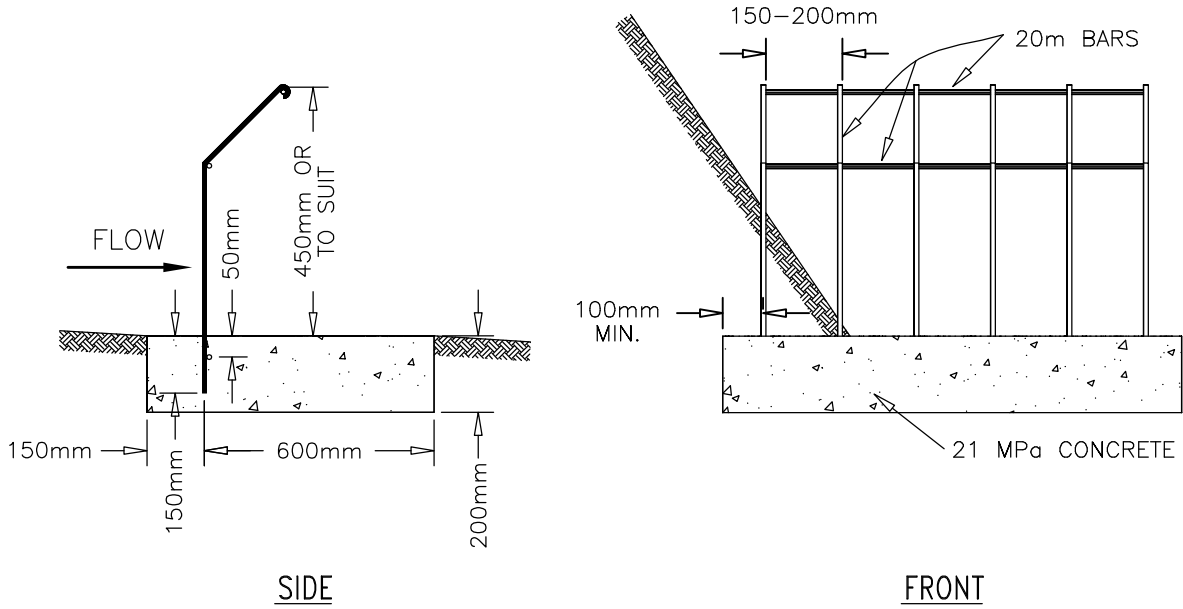
DATE:

05/03

DD-13

DRAWN:

SEH



NOTES:

1. SHALL BE A MINIMUM OF 1.0m FROM ANY CULVERT.

TRASH RACK - TYPE 'B'



CITY OF CHILLIWACK

REVISED:

APPROVED:

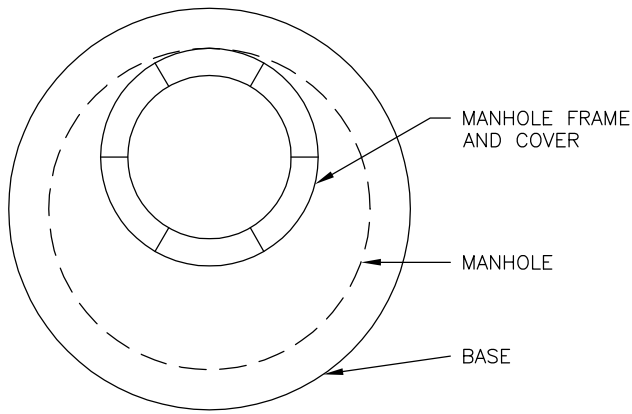
APPROVED:

DWG. NO.

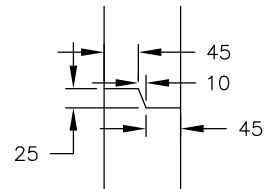
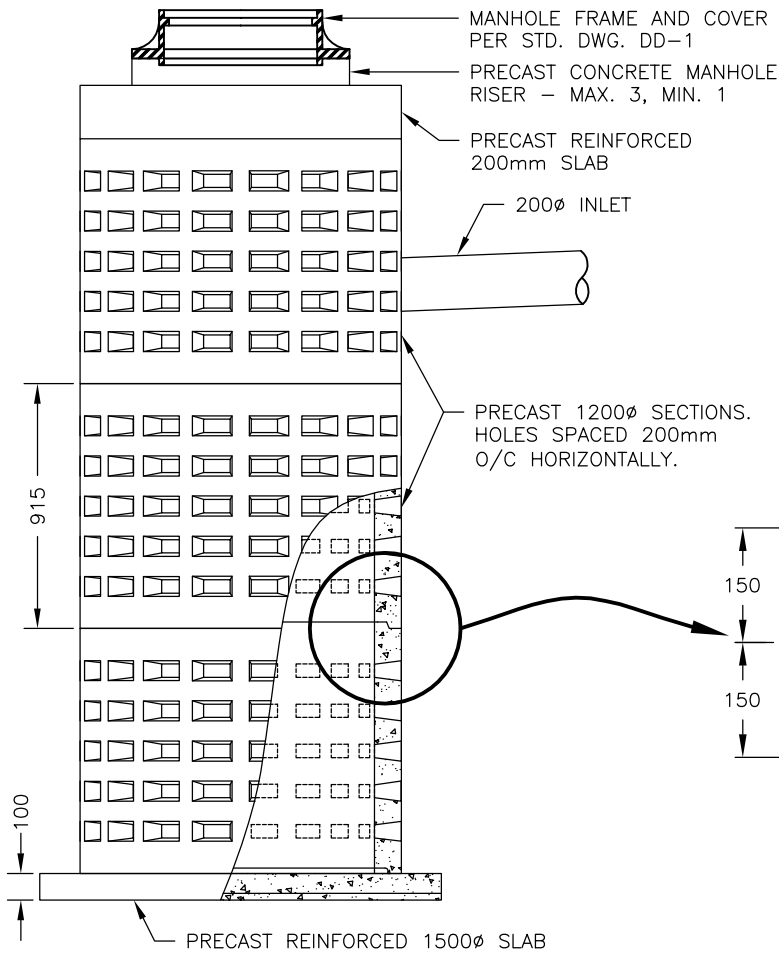
DATE: 05/03

DD-14

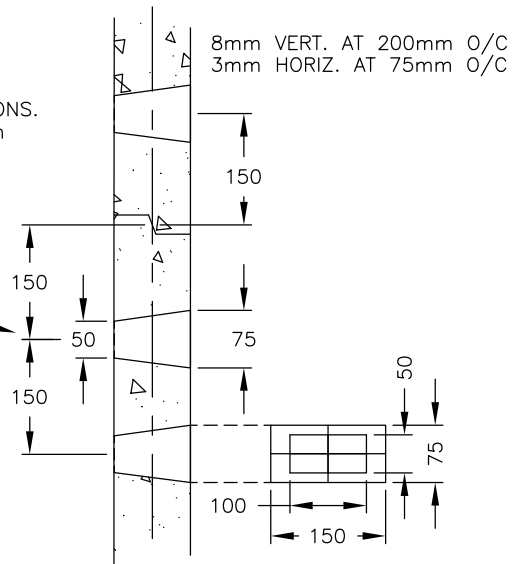
DRAWN: SEH



MANHOLE FRAME AND COVER



JOINT DETAIL



MANHOLE WALL DETAIL

DRYWELL

NOTES:

1. WHERE DRYWELL FORMS PART OF STORM SEWER SYSTEM, MANHOLE RUNGS SHALL BE INSTALLED.
2. USE OF THIS STANDARD IS SUBJECT TO PRIOR APPROVAL OF THE ENGINEERING DIRECTOR.

DRAINAGE DRYWELL



REVISED: 05/08

APPROVED:

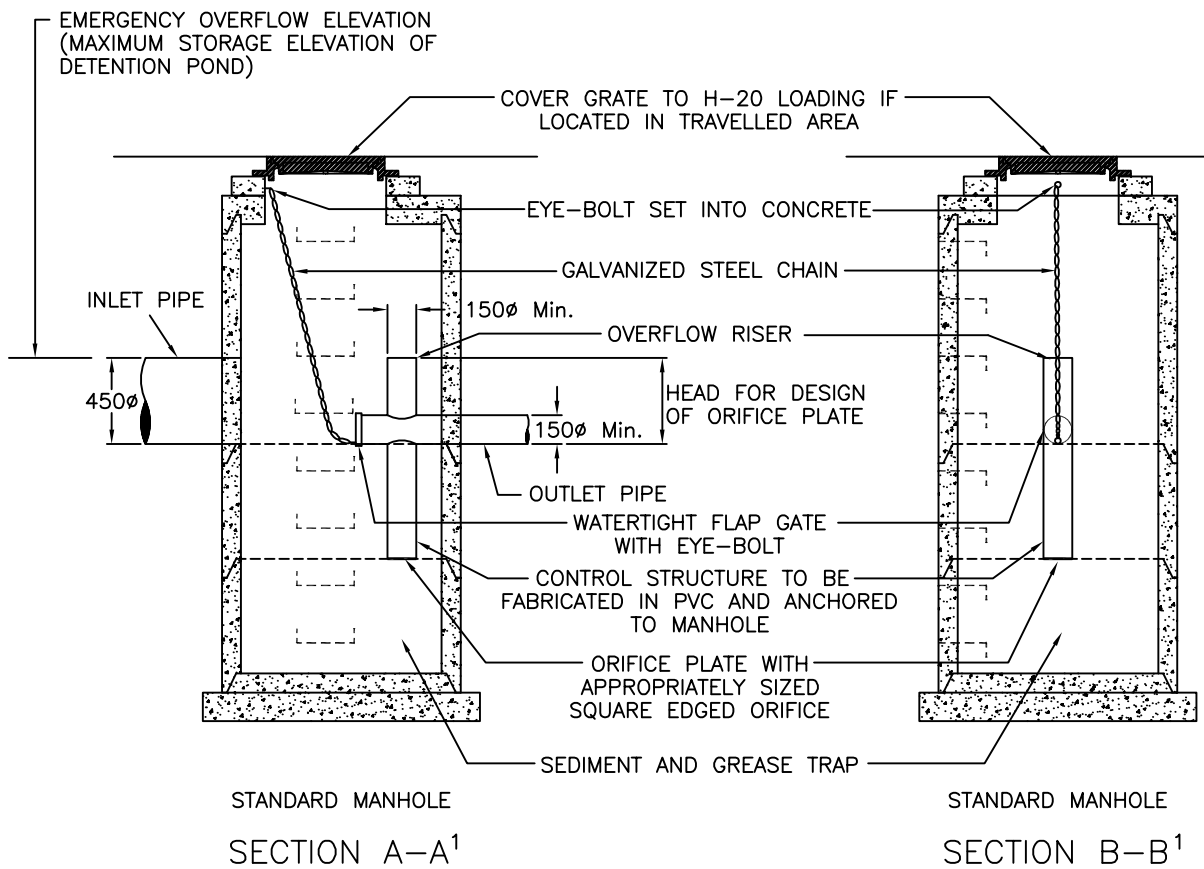
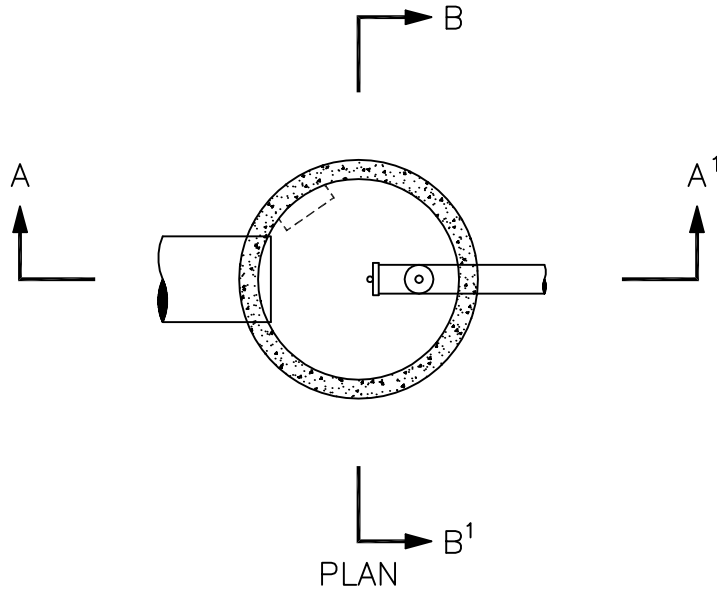
APPROVED:

DWG. NO.

DATE: 05/03

DD-15

DRAWN: SEH



FLOW CONTROL MANHOLE

REVISED:

APPROVED:

APPROVED:

DWG. NO.

DATE: 07/94

DD-16

DRAWN:

SEH



CITY OF CHILLIWACK