



Priority Invasive and Migratory Insects to Report BRITISH COLUMBIA



Insects to watch for and report by anyone interacting with insects. Use the QR CODE to report all observations, including species **regulated by the Canadian Food Inspection Agency (CFIA)**.



Spotted lanternfly, *Lycorma delicatula*

Hosts: Tree of heaven, grapevine, various (fruit) trees and shrubs

Not present in Canada / CFIA REGULATED



Asian longhorned beetle, *Anoplophora glabripennis*

Hosts: Deciduous trees

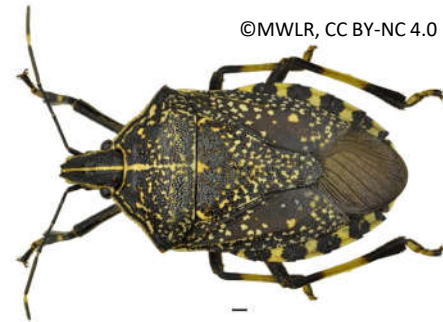
Not present in Canada / CFIA REGULATED



Northern giant hornet, *Vespa mandarinia*

Threat to native bees and honeybee hives
Aggressive with painful sting

Not present in Canada



Yellow-spotted stink bug, *Erthesina fullo*

Hosts: Fruits, vegetables, and ornamental plants

Not present in Canada



Spongy moth, *Lymantria dispar*

Hosts: Oak, maple, beech, willow, apple, plum

Not established in BC

CFIA REGULATED



Japanese beetle, *Popillia japonica*

Hosts: Turf, fruits, vegetables, ornamentals

Limited distribution in B.C.: Lower Mainland only

CFIA REGULATED



Priority Invasive and Migratory Insects to Report BRITISH COLUMBIA



Insects to watch for and report by anyone interacting with insects. Use the QR CODE to report all observations, including species **regulated by the Canadian Food Inspection Agency (CFIA)**.

Szabolcs Sáfián, University of West Hungary, Bugwood.org

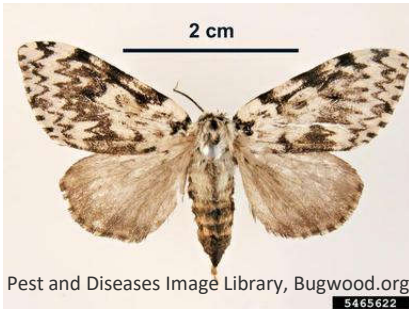


Box tree moth, *Cydalima perspectalis*
Hosts: Boxwood shrubs (*Buxus* spp.)
Not present in BC / CFIA REGULATED

Pest and Diseases Image Library, Bugwood.org



Siberian silk moth, *Dendrolimus sibiricus*
Hosts: Coniferous trees
Not present in Canada



Nun moth, *Lymantria monacha*
Hosts: Mainly coniferous trees
Not present in Canada / CFIA REGULATED



Tomato leafminer, *Tuta (Phthorimaea) absoluta*
Hosts: Tomato, other Solanaceae
Not present in Canada / CFIA REGULATED



Rosy tussock moth, *Lymantria mathura*
Hosts: Oak, beech, fruit trees
Not present in Canada
CFIA REGULATED



European cherry fruit fly, *Rhagoletis cerasi*
Hosts: Cherry varieties and wild honeysuckle
Not present in BC
CFIA REGULATED