

Operations Department



The Operations Department is responsible for the operations and maintenance of the City's water, sanitary sewer, storm drainage, road and dyke infrastructure, as well as the operation and maintenance of the Wastewater Treatment Plant (WWTP), over 100 parks and sports fields and the City's recreational trail network.

Third Quarter Report 2019



**CITY OF
CHILLIWACK**

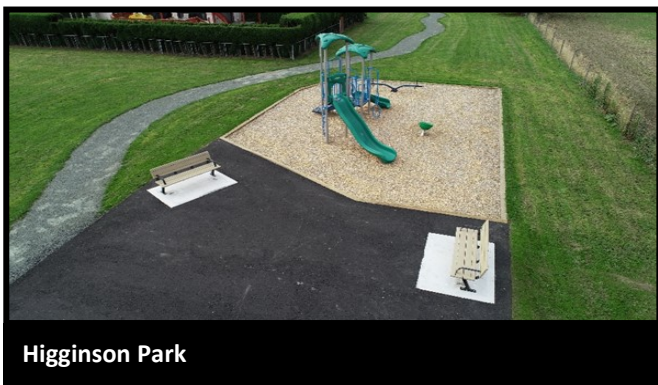
The Landing Playground Upgrades



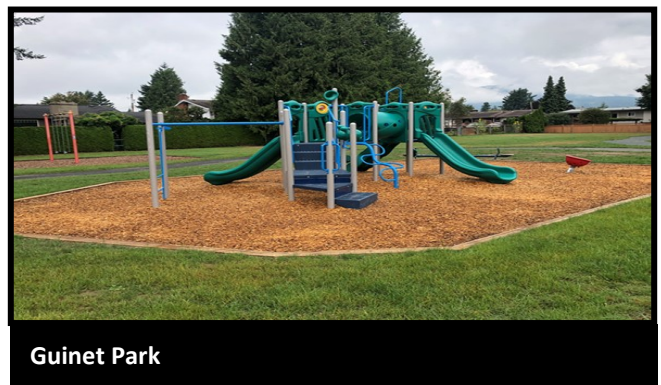
The Landing Playground was designed in sections and scheduled over multiple years to deliver a significant community playground with play value for all ages within annual budgets. The final section of the playground was installed in the summer of 2019 with financial support from an anonymous community member. This area was designed to have an aesthetically pleasing feature play element with an overhead climbing apparatus. A large custom designed excavator machine became the main structure, and is flanked by two operational digging toy features. The main structure provides many ways to climb up to the overhead monkey bars, a large circular slide, a double race slide and a sliding rail. Included in this final section of the playground design was the inclusion of an asphalt pathway around the entire park. This pathway will be marked with street signage to offer a play surface for children of all abilities on all types of wheeled conveyance.

CSA Replacement Program

As part of the almost complete 20-year CSA replacement program, three parks received new play structures and other park amenities in 2019. Community consultation meetings were held in each park in late 2018. The designs were revised based on feedback from the community, and then contracts awarded with construction in the spring of 2019. The parks that received these upgraded play structures and other amenities in 2019 were Guinet Park in Fairfield Island, Higginson Park in Sardis and Parker Park in the downtown area.



Higginson Park



Guinet Park

Kensington Park

The need for a neighbourhood park was identified in the Eastern Hillside Comprehensive Area Plan in 2012. Once development began on Elk Creek Estates in 2015, two parcels of land adjacent to the Marble Hill Natural Area were selected as the most suitable land for park purposes. As Elk Creek Estates developed into a community, interest in the park grew and a meeting was held near the park in late 2018. This meeting guided the design process, resulting in the new Kensington Park. In the community meeting the feedback was for a more natural plan and additional amenities due to the separation from other parks and services in the City. The design, focused on the main wooden parkour structure, offers agility challenges for ages 5-12 while the secondary sand play structure caters to the 2-5 age group. A looping street play path offers a play surface for children of all abilities on all types of wheeled conveyance. Play for other age groups can be found on a sports court with pickle ball, basketball, hockey and other asphalt games. With a small picnic area and drinking fountain, Kensington Park will provide decades of recreation for all age groups.

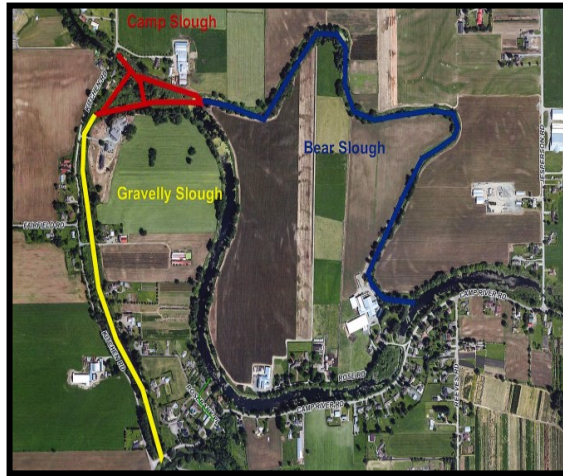


Kinsmen Park on Portage

With consistent, increasing demand on the facilities of Kinsmen Park on Portage, a redeveloped project was scheduled. Due to the complexity and size of the plan, it was scheduled over a two-year period. The redevelopment was completed in 2019 with the relocation of the playground to a more central location. The new play structures include the large “centre stage” structure with three slides and four ways to climb up, and a smaller structure with classic spring toys for ages 2-5. Guardian viewing has been made comfortable from three benches located in a large paved guardian area with a historical display. An asphalt pathway offers a play surface for children of all abilities on all types of wheeled conveyance.



Slough Ditching 2019



Instream cleaning and maintenance of the Hope and Camp systems continued in 2019. Camp Slough cleaning involved cleaning of Gravelly Slough from the confluence of Hope Slough to Camp Slough. Camp Slough was cleaned to the confluence of Bear Slough. Bear Slough was cleaned around and reconnected to Camp Slough at Rose Road. The map above shows the extent of the cleaning works. A total of 4,000 lineal metres of grass, log, and sediment removal was completed between September 16 and October 8. A 55 foot long boom excavator was used for the cleaning and as a requirement of permit. Nova Pacific Environmental personnel monitored the instream works. The total cost to complete the 2019 work at this location was approximately \$40,000. Each year the Hope and Camp systems are seeing more and more waterway cleaned and opened up which not only benefits drainage for the area but also increases recreational opportunities for water borne activities.

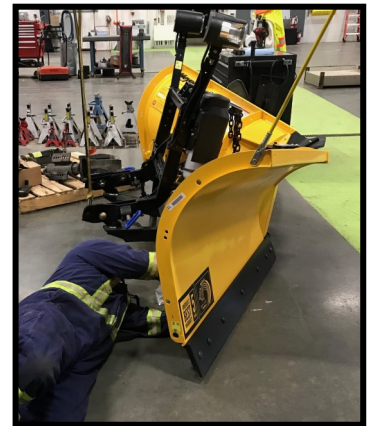
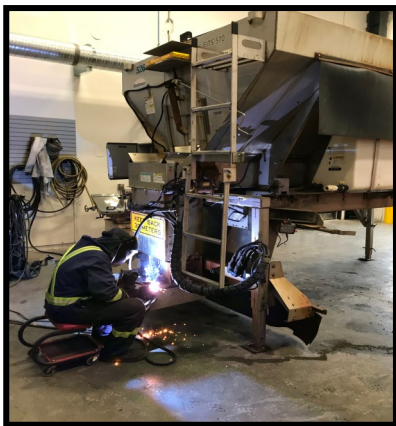
Eagle Nest Relocation



Transport Canada requires periodic surveys to be carried out to determine if any structures or trees have the potential to intrude into the airspace of the Chilliwack Airport approach corridor. Developed as a result of these surveys, the City's tree management plan for the airport runway approach required staff to condition a few trees, one of which contained an eagle's nest. The nest had to be relocated outside of the nesting season. The City requested assistance from the experts at the Hancock Wildlife Foundation and under their guidance and supervision a new nest was partially built on September 16, followed by the original nest being removed on September 27. The eagle pair that inhabited the old nest were spotted returning to the area the week of October 7. The new nest will now be monitored to see if the pair adopt it as their own and complete its construction. To date the Hancock Foundation has seen a 100% success rate in eagle nest relocations. The pictures show the returning pair and the manmade nest.

Winter Preparedness at Operations

The Operations Department has been hard at work preparing the City's fleet and personnel for the upcoming winter season. 4-hour refresher sessions were attended by 70 workers who will be diligently working to keep our city safe this winter. This refresher training highlighted key factors for the safe performance of winter weather tasks such as plowing and spreading brine and salt around our hillsides and downtown streets. Equipment inspection and maintenance were also components of the training, reminding everyone to remain alert for potentially unsafe conditions. Ten workers who are newer to the winter program attended an 8-hour classroom course where they received in-depth theory on operating equipment during the winter storms. Along with winter theory, 52 hours of one-on-one driver training with a professional instructor were completed. Fleet Department mechanics have been inspecting and maintaining the necessary equipment to ready for winter operations. Snow blowers, sanders, plows, tire chains, tractor attachments and the new additions to snow removal components have been readied for action. Improvements have been made to the anti-icing system for improved safety throughout winter operations. The Operations Yard has been filled with salt and sand and the brine is ready for mixing. With the completion of the new satellite salt and sand facility on Nixon Road, the Operations Department has been readied for the winter to come.



Second Garbage Truck Added to Operations Department

The Operations Department received its second garbage truck in the third quarter. The new truck is capable of compacting up to 6.5 cubic yards of refuse and is equipped with a high pressure washdown system to clean out garbage cans and other debris from sidewalks and walkways. This second truck enables crews to increase garbage collection services for parks and trails and can allow for expanded services.



SPS #8 Gets Emergency Standby Power Capability

The Operations Department recently installed a new generator to provide the ability to generate standby power in the sewer system during a power outage. The City of Chilliwack's water, sewer and drainage stations must continue to operate during prolonged power outages in order to assure utility services are maintained for all residents. Severe storms, motor vehicle accidents and widespread power outages create operational challenges; portable generators are often difficult to tow around and require staff and vehicle resources. Static generators have a higher initial capital cost, but in the long term with a service life of 30+ years, these installations are more efficient and provide cost savings. The latest permanent installation on Brooks Avenue (SPS #8) was planned based on factors such as historical outage data, site access, operational requirements and available property to site the generator. The generator and kiosk will also be wrapped to improve aesthetics once the weather allows for wrap installation. The City's water and sewer infrastructure is now equipped with a total of 49 standby generators located throughout the City.

