

NOTES:

1. IN RURAL AREAS WHERE A DITCH IS REQUIRED IN A CUT, THE AREA AS SHOWN ABOVE SHALL BE RETAINED BY SUITABLE SIDESLOPES OR WALLS.
2. MINIMUM CULVERT LENGTH SHALL BE 4m. CULVERT TO BE SIZED TO ACCOMMODATE THE DESIGN FLOW OF THE DITCH/WATERCOURSE.
3. MAINTAIN MIN. 1.0m SEPARATION FROM WATERMAIN TO TOP OF CULVERT. IF NOT PRACTICAL, DIRECTION FOR ALTERNATE METHOD SHALL BE FROM THE ENGINEERING DIRECTOR.
4. NOTWITHSTANDING NOTE 3, AN "R10" INSULATION SHALL BE MAINTAINED FOR THE WATERMAIN TO PROTECT FROM FREEZING.

RURAL FIRE HYDRANT ASSEMBLY



CITY OF CHILLIWACK

REVISED: 11/09

APPROVED:

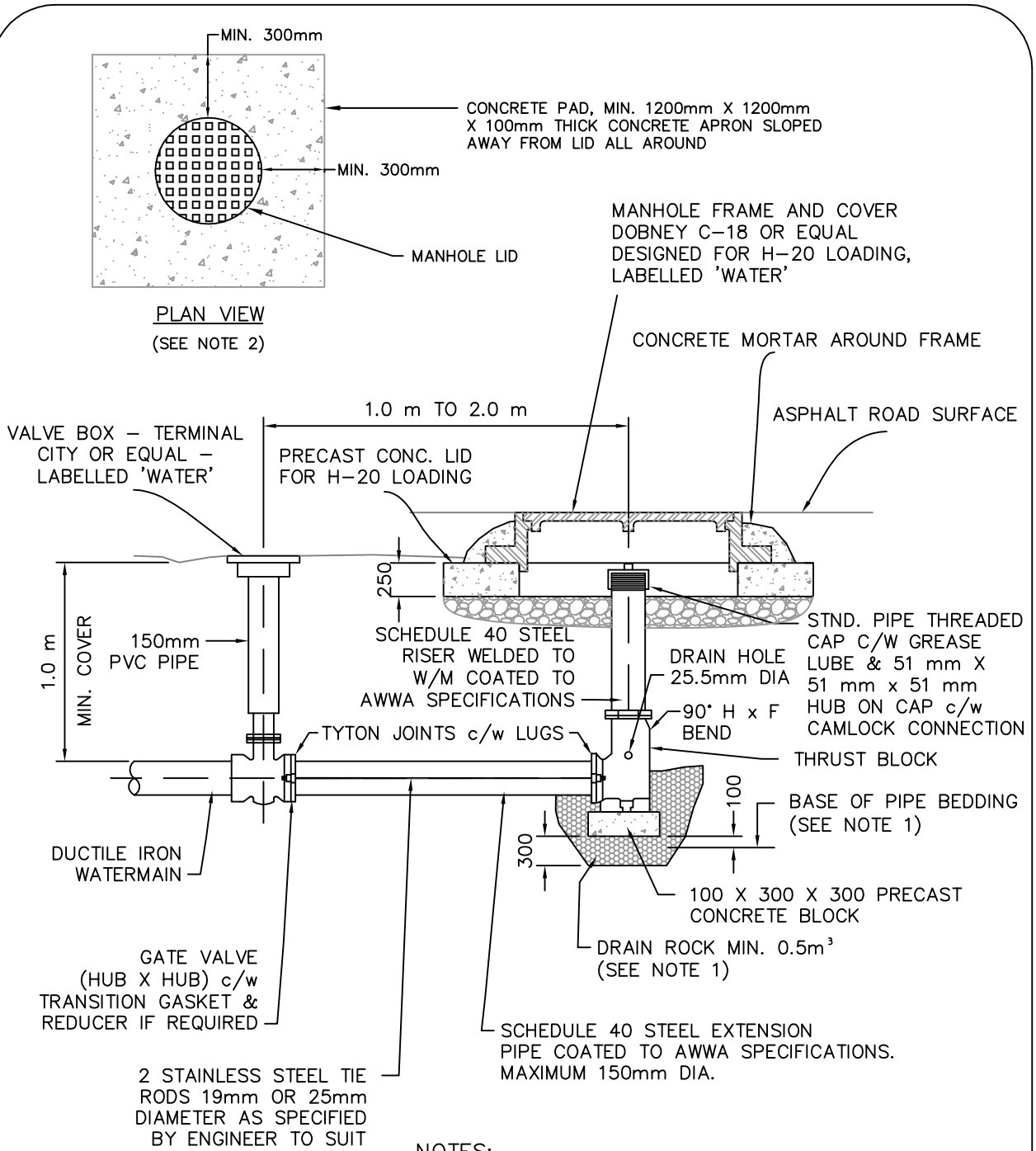
APPROVED:

DWG. NO.

DATE: 06/94

DW-1

DRAWN: SEH



MAIN DIA.	STAND PIPE
100 mm	100 mm
150 mm	100 mm
>150 mm	150 mm

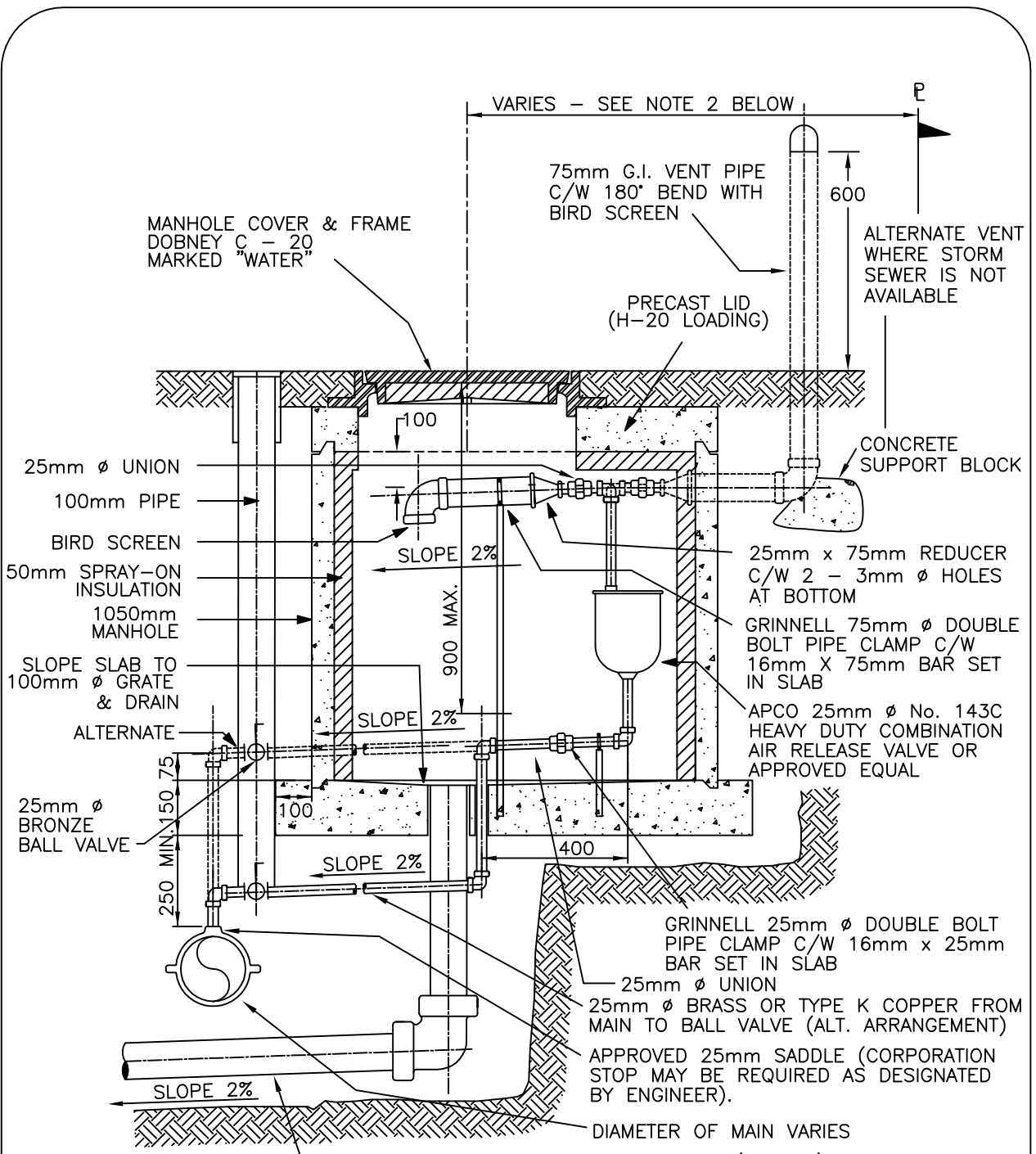
NOTES:

1. FOR INSTALLATIONS SHOWN ON CONTRACT DRAWINGS WHERE WATER TABLE (AT SEASONAL HIGH) IS ABOVE BASE OF DRAIN ROCK, INSERT THREADED PLUGS IN DRAIN HOLES AND SUBSTITUTE GRANULAR PIPE BEDDING FOR DRAIN ROCK. (COMPACT PIPE BEDDING TO BE 95% MODIFIED PROCTOR DENSITY).
2. IN UNTRAVELED AREAS, SURROUND MANHOLE LID WITH MINIMUM 1200mm x 1200mm x 200mm THICK CONCRETE APRON SLOPED AWAY FROM LID ALL AROUND.

BLOW - OFF

REVISED: 03/2012	APPROVED:	
APPROVED:	DWG. NO.	
DATE: 02/2002	DW-2	
DRAWN: THJ		





NOTES:

1. SPECIAL DESIGN REQUIRED WHEN DISTANCE FROM TOP OF MAIN TO MANHOLE COVER IS LESS THAN 1.2m.
2. MANHOLE LID TO BE CENTERED IN SIDEWALK WHERE SIDEWALK IS ON THE SAME SIDE OF ROAD AS WATERMAIN. OTHERWISE LOCATE IN BOULEVARD CENTRED AT 3m FROM PROPERTY LINE IN URBAN AREAS OR 4m FROM PROPERTY LINE IN RURAL AREAS. C/W ACCESS PAD AND APPROVED CULVERT WHERE REQUIRED.
3. 50mm SPRAY-ON INSULATION (ALL INSIDE SURFACES).
4. CHAMBER IS NOT TO BE INSTALLED IN ROAD SURFACE.

AIR AND VACUUM VALVE CHAMBER



**CITY OF
CHILLIWACK**

REVISED: 12/13

APPROVED:

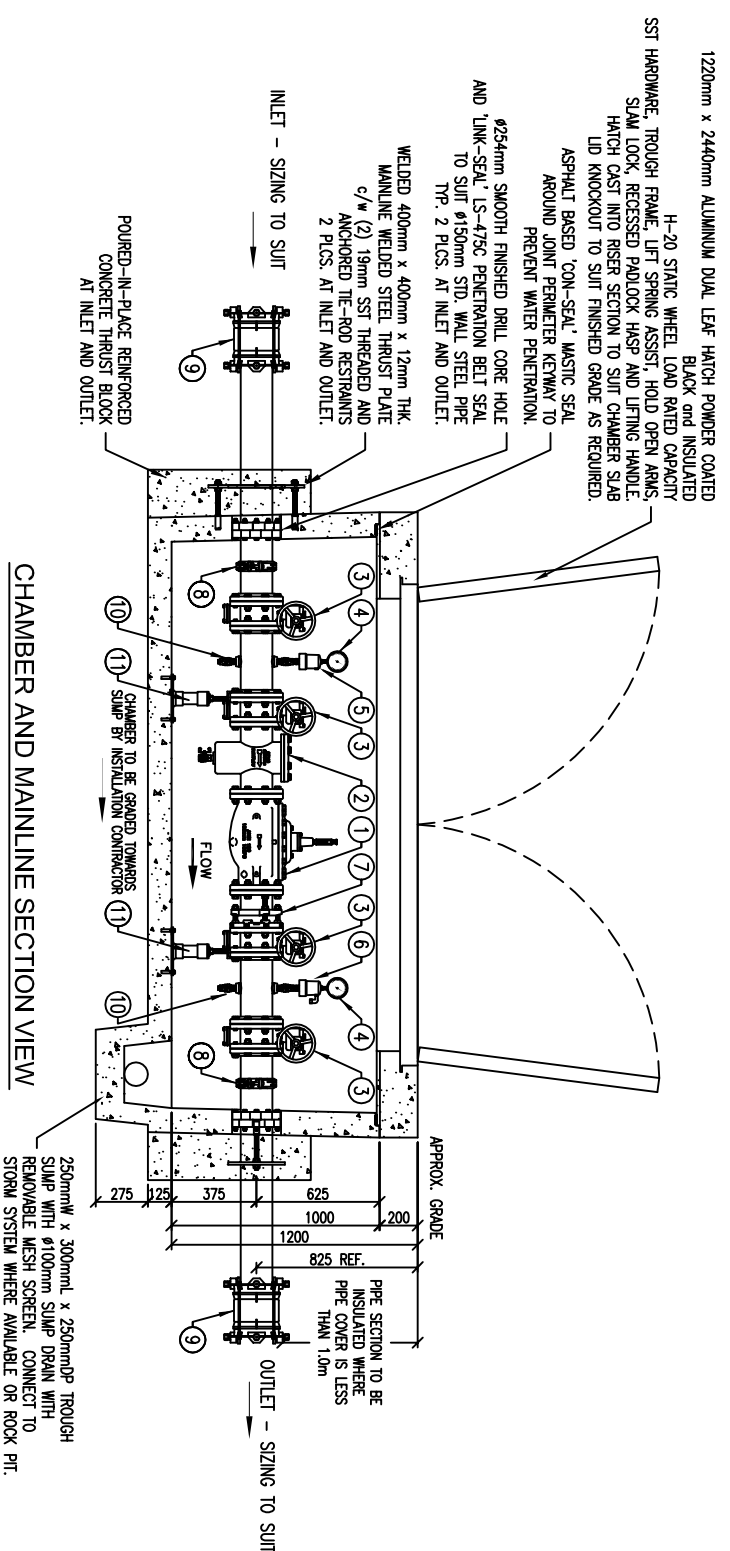
APPROVED:

DWG. NO.

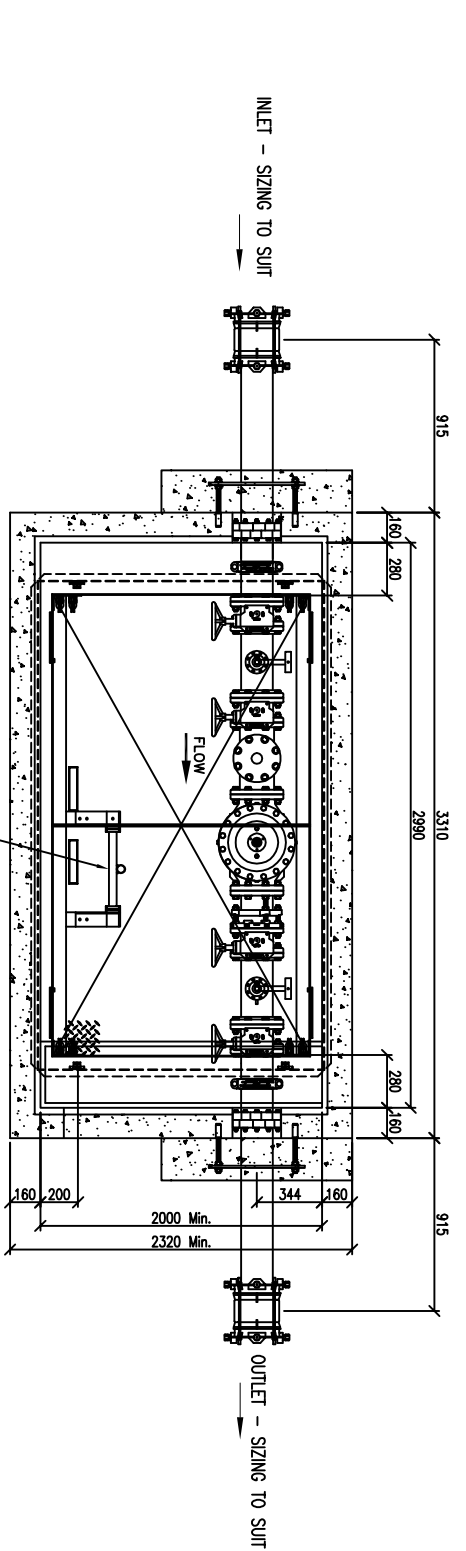
DATE: 06/94

DW-3

DRAWN: SEH



N.T.S.



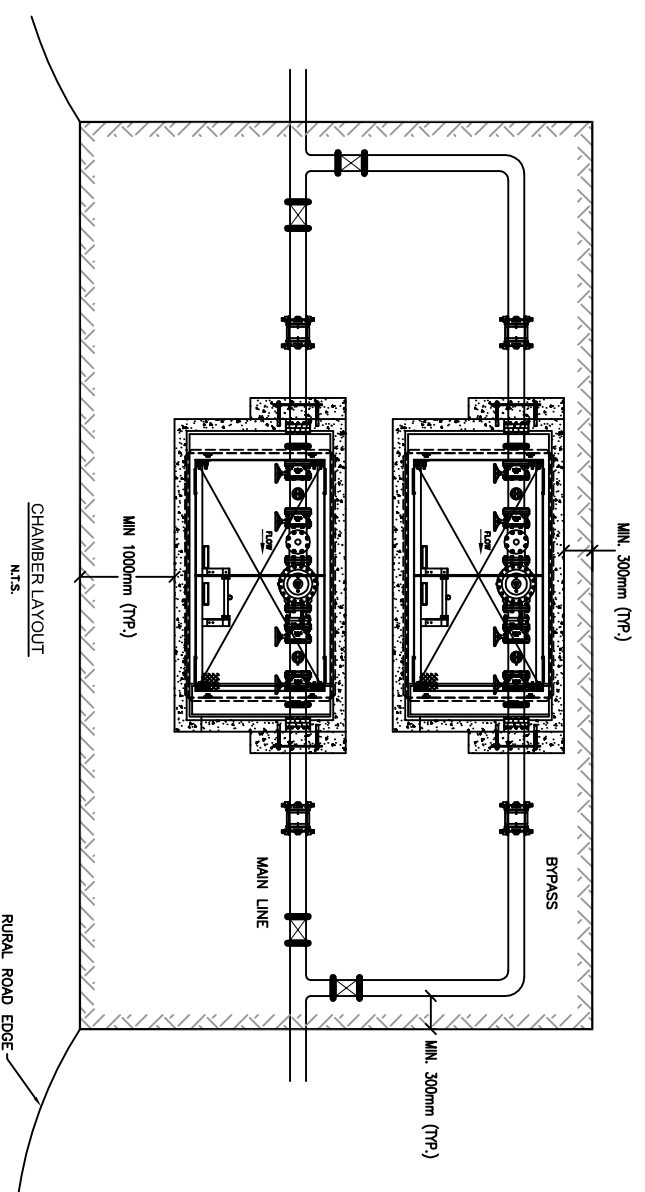
N.T.S.


CONTROL VALVE STATION ASSEMBLY PLAN VIEW

DATE	REVISIONS	BY	APPR.	LEGEND	DESIGNED	CHECKED	DATE	HORIZ.	VERT.
09/07/15	REVISIONS PER C.O.C.	SEH	BV/18				APR/3/08	1 : 20	
09/10/20	REVISIONS PER C.O.C.	SEH	BV/18						
09/19/21	REVISIONS PER C.O.C.	SEH	BV/18						
10/15/11	REVISIONS PER C.O.C.	SEH	CH						
12/02/21	REVISIONS PER C.O.C.	SEH	CH						
12/03/06	REVISIONS PER C.O.C.	SEH	CH						
12/12/03	REVISIONS PER C.O.C.	SEH	CH/SH						

- NOTES:
1. ALL FABRICATED PIPE SECTIONS, FITTINGS, PIPE STANDS AND VENT PIPES SHALL BE SANDBLASTED, LINED AND COATED WITH FUSION BONDED EPOXY IN CONFORMANCE WITH AWWA C-213 STANDARDS. MEETING NSF-61 APPROVAL. ENAMEL BLUE COLOR.
 2. ALL PIPE USED FOR FABRICATION SECTIONS SHALL CONFORM TO AWWA C200 STANDARD. ALL FABRICATED PIPE SECTIONS SHALL CONFORM TO ASTM A-33GRADE B STANDARD WALL PIPE ANSI STANDARD B16.9.
 3. ALL STEEL FITTINGS SHALL CONFORM TO ASTM A-234 GRADE WPB, ANSI B16.28.
 4. STAINLESS STEEL F-599 HEX BOLTS AND F-574 HEX NUTS c/w SAE STAINLESS STEEL WASHERS USED THROUGHOUT ASSEMBLY.
 5. FULL FACE 3mm THK. RED RUBBER GASKETS USED THROUGHOUT ASSEMBLY.
- AE CONCRETE PRE-CAST CONCRETE #3151 FIRELINE METER CHAMBER INSIDE DIMENSIONS: 3000mm L x 1500mm W x 1100mm H, DESIGNED TO MEET AASHTO H20-44 DESIGN LOADING.
1. CONCRETE - 35MPa @ 28 DAYS.
 2. STEEL REBAR - CSA G-30, 18-M92 GRADE 400.
 3. APPROXIMATE WEIGHT:
 - SLAB SECTION /w LID 5,500 lb
 - CHAMBER SECTION 12,000 lb
 4. CS-55 CONSEAL OR APPROVED EQUAL BLACK DAMP-PROOF COATING ON ALL EXTERIOR SURFACES.
 5. CHAMBER FLOOR TO BE GRADED TOWARDS SWAMP BY INSTALLATION CONTRACTOR.
 6. SCADA CONNECTION, REQUIRED FOR PRESSURE MONITORING.
 7. FRESH AIR FACILITY WHEN WORKING INSIDE.
 8. EXTERNAL KIOSK TO HOUSE ELECTRICAL AND ELECTRONIC EQUIPMENT.
 9. FROST PROTECTION REQUIRED WHERE DEPTH FROM TOP OF PIPE TO UNDERSIDE OF LID IS LESS THAN 1.2m.
 10. MAINLINE SIZING TO BE CONSISTENT WITH WATERMAIN. BYPASS ASSEMBLY MAY BE REDUCED SIZE WITH APPROVAL OF CITY ENGINEER.
 11. INCORPORATE CHAMBER LID INTO SIDEWALK WHERE AVAILABLE. EXTEND CONCRETE SURFACE 500mm (MIN.) BEYOND THE EDGE OF THE LID. PROVIDE POSITIVE DRAINAGE AWAY FROM THE CHAMBER.
 12. IN RURAL AREAS OR ADJACENT TO ROADWAYS WITHOUT CURB AND GUTTER, CHAMBER IS TO BE INSTALLED WITH THE LID 100mm (MIN.) ABOVE THE ROAD EDGE. PROVIDE 50mm THICK ASPHALT APRON (TO ROADWAY STANDARD) FLUSH TO TOP OF LID WITH POSITIVE DRAINAGE AWAY FROM CHAMBER AND THE INTO ROADWAY EDGE. EXTEND APRON A MINIMUM OF 1000mm BEYOND THE CHAMBER TO THE ROAD AND A MINIMUM OF 300mm IN ALL OTHER DIRECTIONS. PROVIDE GRAVEL PARKING SPACE OFF ROADWAY ADJACENT TO CHAMBER FOR A MINIMUM OF ONE SERVICE VEHICLE.
 13. ISOLATION VALVES ASSOCIATED WITH THE PRV CHAMBER OUTSIDE OF ROADWAY ARE TO HAVE ASPHALT APRON EXTENDING A MINIMUM OF 300mm AROUND (CAN BE INCORPORATED INTO CHAMBER APRON) AND 50mm THICK.

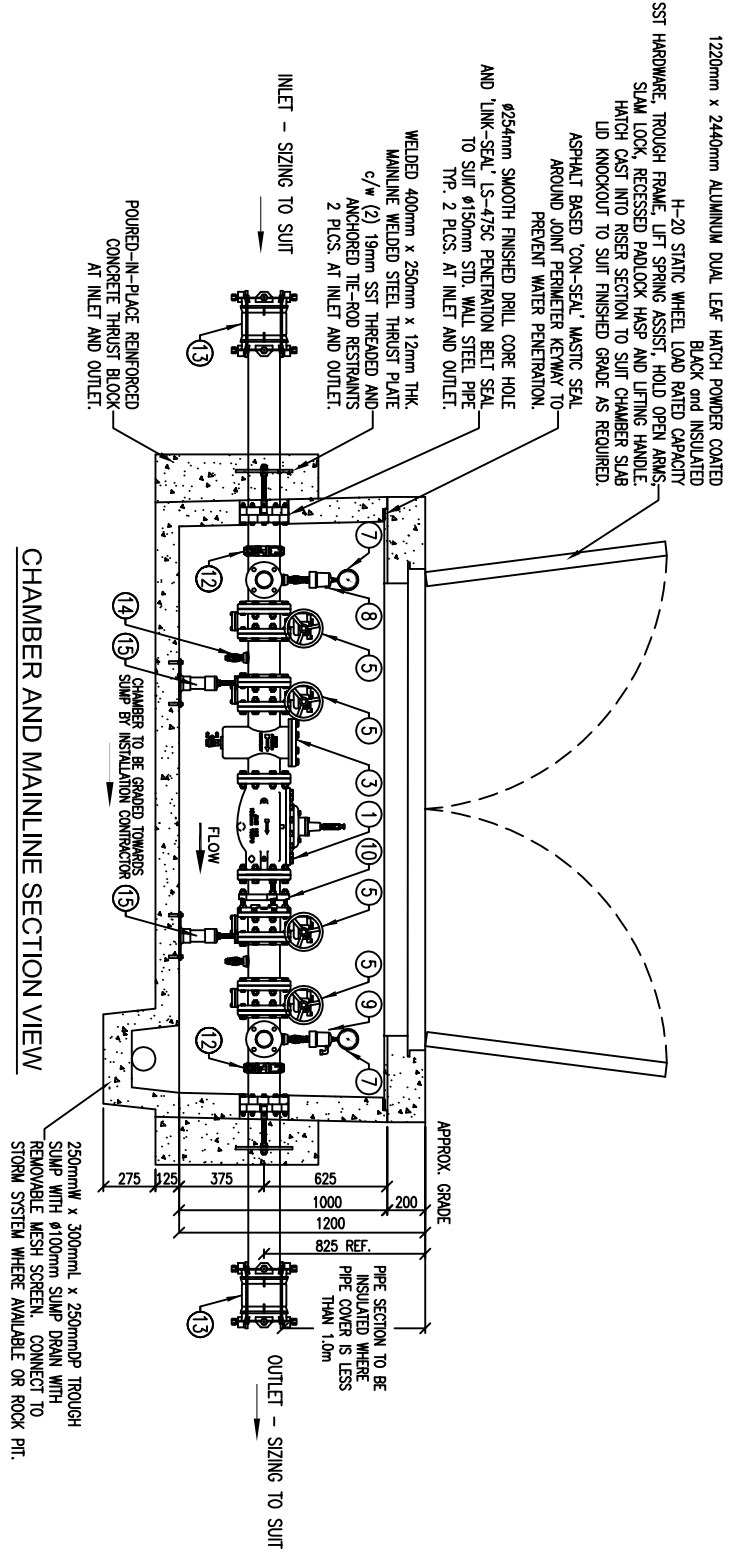
MATERIAL LIST (per Chamber)			FLANGE RATING
ITEM QTY	DESCRIPTION		
1	SINGER MODEL 106-PR-48 FULL PORT PRESSURE REDUCING CONTROL VALVE WITH LOW FLOW BYPASS, ANSI CLASS 150R FLANGED BODY c/w X107 SIGHT GLASS VALVE STEM POSITION INDICATOR ASSEMBLY, STRAINER, (3) ISOLATION BALL VALVES, MODEL 26 FLOW STABILIZER, MODEL 160 PILOT ASSEMBLY, SPRING RANGE AND LOW PRESSURE SET POINT TO BE DETERMINED.		ANSI 150
2	SURE FLOW BF-125C CAST IRON FLANGED BASKET STRAINER, MESH BASKET c/w FUSION BONDED EPOXY LINED AND COATED.		ANSI 125
3	VAL-MATIC AWWA C504 CLASS 150R FLANGED BUTTERFLY VALVE c/w GEAR OPERATOR, HANDWHEEL AND POSITION INDICATOR.		ANSI 150
4	PRESSURE GAUGE ASSEMBLY, ENFM psikPa DUAL SCALE, OIL FILLED, Ø100mm FACE, c/w ISOLATION VALVE FOR PRESSURE TRANSMITTERS.		
5	A.R.L. S450-C AUTOMATIC AIR RELEASE VALVE c/w 25mm ISOLATION BALL VALVE AND 180° VENT PIPE RETURN.		
6	A.R.L. D-440-C COMBINATION AIR RELEASE & VACUUM VALVE c/w 25mm ISOLATION BALL VALVE AND 180° VENT PIPE RETURN.		
7	ROMAC D1-100 ANSI CLASS 150R FLANGED RESTRAINED DISMANTLING JOINT c/w EPOXY COATING.		
8	SHURJOINT MODEL Z07 GROOVED RIGID COUPLING, FUSION EPOXY COATED.		
9	EBAL IRON SERIES 3807 MEGA COUPLING RESTRAINED STEEVE TRANSITION COUPLING, STEEL X DRIPVC CONNECTION, EBAL IRON MODEL #RS3800 OR EQUAL.		
10	19mm BALL VALVE OR HOSE BIB ASSEMBLY c/w VACUUM BREAKER FOR TEST, SAMPLE OR WASHDOWN.		
11	ADJUSTABLE 50mm SCH. 40 PIPE FLANGE OR SADDLE SUPPORT STANDS OF RATED LOAD CAPACITY, TO BE ANCHORED IN PLACE TO WALLT BASE SECTION, FUSION EPOXY COATED WITH SST THREADED ROD AND HARDWARE.		
12	PROVISIONS FOR A SINGLE PHASE 30AMP 240V HYDRO SERVICE c/w 21-27mm CONDUITS TO PRV CHAMBERS FOR FUTURE SCADA MONITORING.		



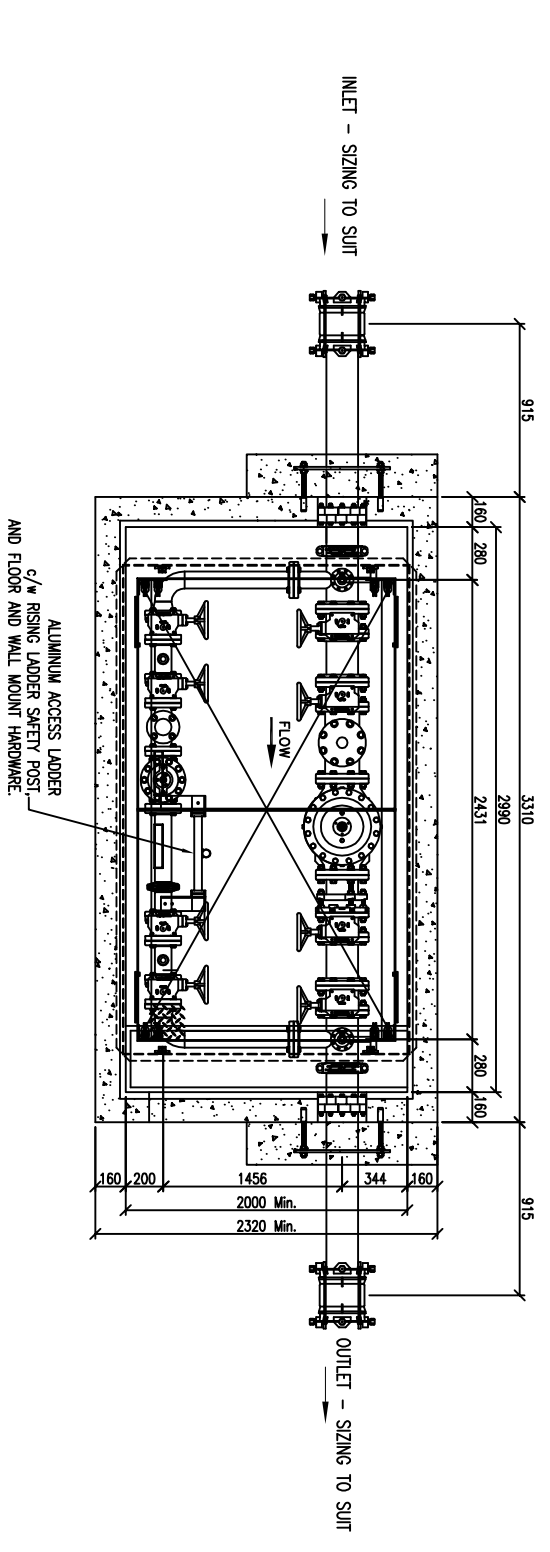


PRESSURE REDUCING STATION
TYPICAL PRV STATION LAYOUT
(250mm and LARGER)

DWG. NO.
DW-4A



CHAMBER AND MAINLINE SECTION VIEW
N.T.S.

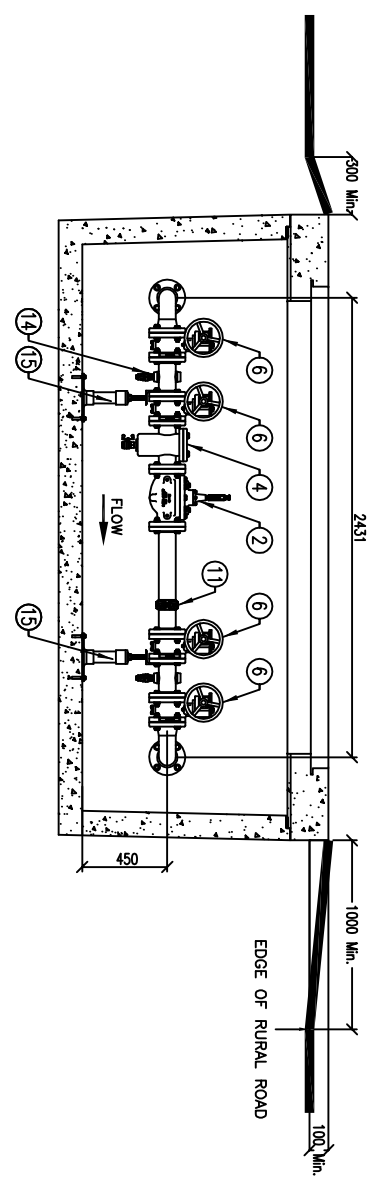


CONTROL VALVE STATION ASSEMBLY PLAN VIEW
N.T.S.

DATE	REVISIONS	BY	APPR.	LEGEND	DESIGNED
09/10/20	REVISIONS PER C.O.C.	SEH	BR/AB		DRAWN
09/10/22	REVISIONS PER C.O.C.	SEH	BR/AB		CHECKED
10/12/11	REVISIONS PER C.O.C.	SEH	CI		DATE
12/02/23	REVISIONS PER C.O.C.	SEH	CI		HORIZ.
12/03/06	REVISIONS PER C.O.C.	SEH	CI		VERT.
12/08/13	REVISIONS PER C.O.C.	SEH	CM/AM		1 : 20
13/12/20	REVISIONS PER C.O.C.	SEH	CM/SH		

- NOTES:
1. ALL FABRICATED PIPE SECTIONS, FITTINGS, PIPE STANDS AND VENT PIPES SHALL BE SANDBLASTED, LINED AND COATED WITH FUSION BONDED EPOXY IN CONFORMANCE WITH AWWA C-213 STANDARDS. MEETING NSF-61 APPROVAL. ENAMEL BLUE COLOR.
 2. ALL PIPE USED FOR FABRICATED SECTIONS SHALL CONFORM TO AWWA C200 STANDARD. ALL FABRICATED PIPE SECTIONS SHALL CONFORM TO ASTM A-53GRADE B STANDARD WALL PIPE ANSI STANDARD B16.9.
 3. ALL STEEL FITTINGS SHALL CONFORM TO ASTM A-234 GRADE WPB, ANSI B16.28.
 4. STAINLESS STEEL F-599 HEX BOLTS AND F-57.4 HEX NUTS c/w SAE STAINLESS STEEL WASHERS USED THROUGHOUT ASSEMBLY.
 5. FULL FACE 3mm THK. RED RUBBER GASKETS USED THROUGHOUT ASSEMBLY.

- AE CONCRETE PRE-CAST CONCRETE #3151 FIRELINE METER CHAMBER INSIDE DIMENSIONS: 3000mm L x 1500mm W x 1100mm H. DESIGNED TO MEET AASHTO H20-44 DESIGN LOADING.
1. CONCRETE - 35MPa @ 28 DAYS.
 2. STEEL REBAR - CSA G-30, 18-M92 GRADE 400.
 3. APPROXIMATE WEIGHT:
SLAB SECTION/W/ LID 5,500 lb.
CHAMBER SECTION 12,000 lb
 4. CS-55 CONSEAL OR APPROVED EQUAL BLACK DAMP-PROOF COATING ON ALL EXTERIOR SURFACES.
 5. CHAMBER FLOOR TO BE GRADED TOWARDS SUMP BY INSTALLATION CONTRACTOR.
 6. SCADA CONNECTION, REQUIRED FOR PRESSURE MONITORING.
 7. FRESH AIR FACILITY WHEN WORKING INSIDE.
 8. EXTERNAL KIOSK TO HOUSE ELECTRICAL AND ELECTRONIC EQUIPMENT.
 9. FROST PROTECTION REQUIRED WHERE DEPTH FROM TOP OF PIPE TO UNDERSIDE OF LID IS LESS THAN 1.2m.
 10. MAINLINE SIZING TO BE CONSISTENT WITH WATERMAIN. BYPASS ASSEMBLY MAY BE REDUCED SIZE WITH APPROVAL OF CITY ENGINEER.
 11. INCORPORATE CHAMBER LID INTO SIDEWALK WHERE AVAILABLE. EXTEND CONCRETE SURFACE 500mm (MIN.) BEYOND THE EDGE OF THE LID. PROVIDE POSITIVE DRAINAGE AWAY FROM THE CHAMBER.
 12. IN RURAL AREAS OR ADJACENT TO ROADWAYS WITHOUT CURB AND GUTTER, CHAMBER IS TO BE INSTALLED WITH THE LID 100mm (MIN.) ABOVE THE ROAD EDGE. PROVIDE 50mm THICK ASPHALT APRON (TO ROADWAY STANDARD) FLUSH TO TOP OF LID WITH POSITIVE DRAINAGE AWAY FROM CHAMBER AND THE INTO ROADWAY EDGE. EXTEND APRON A MINIMUM OF 1000mm BEYOND THE CHAMBER TO THE ROAD AND A MINIMUM OF 300mm IN ALL OTHER DIRECTIONS. PROVIDE GRAVEL PARKING SPACE OFF ROADWAY ADJACENT TO CHAMBER FOR A MINIMUM OF ONE SERVICE VEHICLE.
 13. ISOLATION VALVES ASSOCIATED WITH THE PRV CHAMBER OUTSIDE OF ROADWAY ARE TO HAVE ASPHALT APRON EXTENDING A MINIMUM OF 300mm AROUND (CAN BE INCORPORATED INTO CHAMBER APRON) AND 50mm THICK.



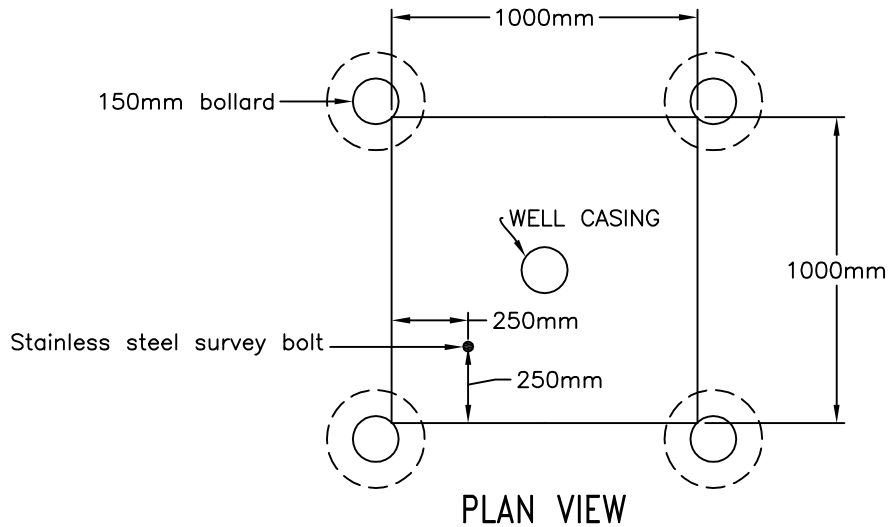
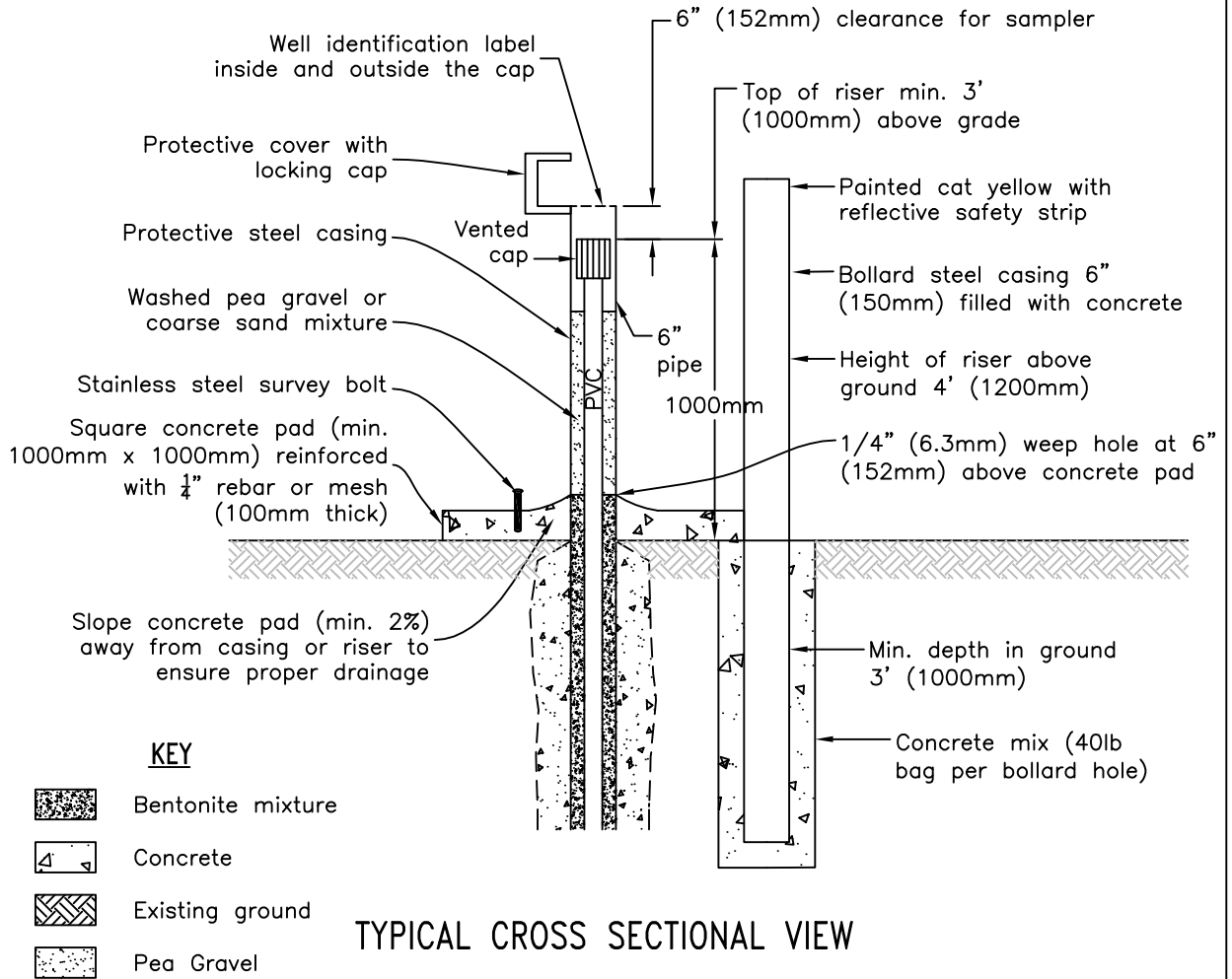
BYPASS SECTION VIEW

MATERIAL LIST

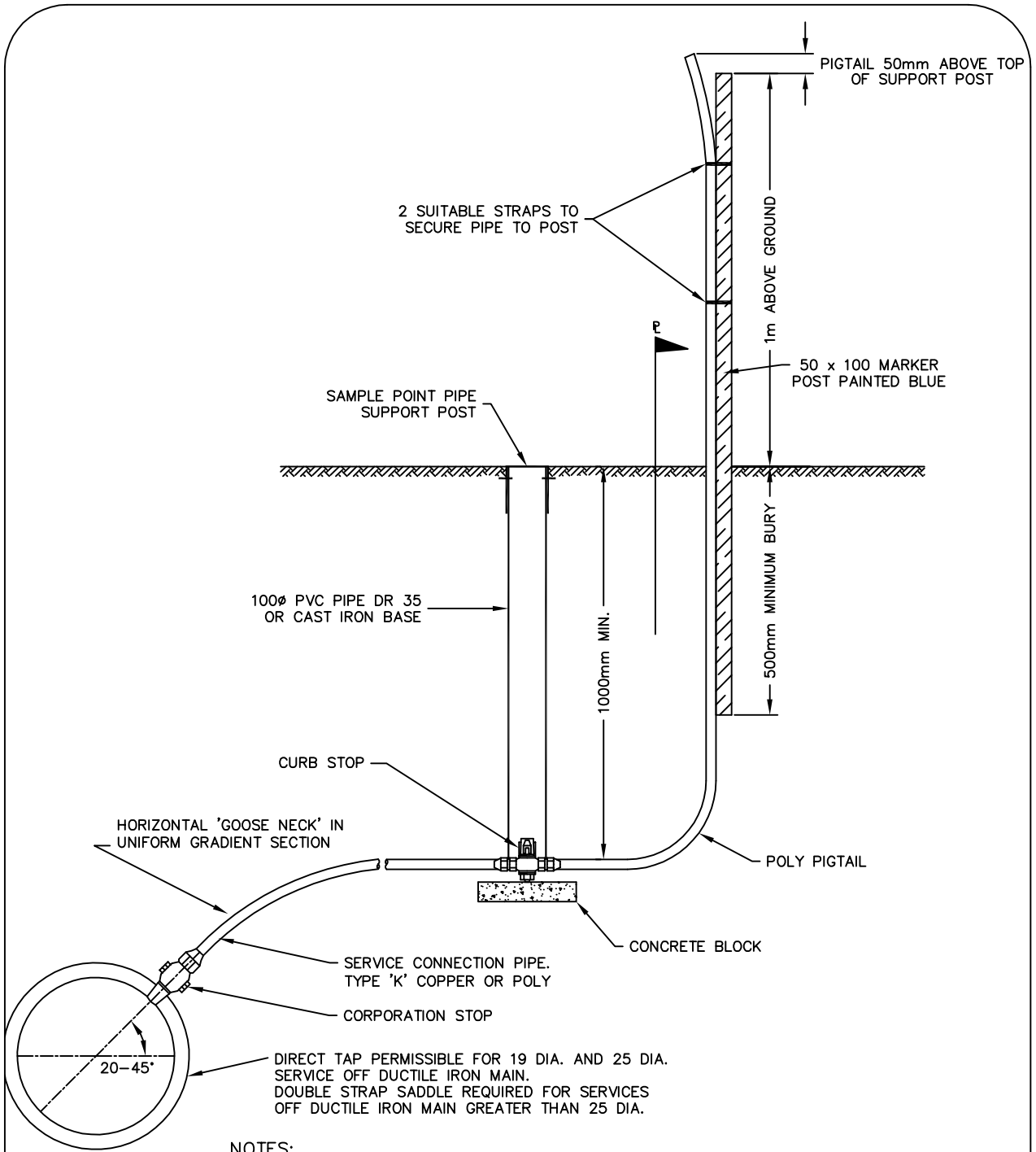
ITEM QTY	DESCRIPTION	FLANGE RATING
1	SINGER MODEL 106-PR-48 FULL PORT PRESSURE REDUCING CONTROL VALVE WITH LOW FLOW BYPASS, ANSI CLASS 150# FLANGED BODY c/w X107 SIGHT GLASS POSITION INDICATOR ASSEMBLY, STRAINER, (3) ISOLATION BALL VALVES, MODEL 26 FLOW STABILIZER ASSEMBLY, SPRING RANGE DETERMINED.	ANSI 150
2	SINGER MODEL 106-PR FULL PORT PRESSURE REDUCING CONTROL VALVE, ANSI CLASS 150# FLANGED BODY c/w X107 SIGHT GLASS VALVE STEM POSITION INDICATOR ASSEMBLY, STRAINER, (3) ISOLATION BALL VALVES, MODEL 26 FLOW STABILIZER, MODEL 180 PILOT ASSEMBLY, SPRING RANGE AND LOW PRESSURE SET POINT TO BE DETERMINED.	ANSI 150
3	SURE FLOW BF-25C CAST IRON FLANGED BASKET STRAINER, MESH BASKET c/w FUSION BONDED EPOXY LINED AND COATED.	ANSI 125
4	SURE FLOW BF-25C CAST IRON FLANGED BASKET STRAINER, MESH BASKET c/w FUSION BONDED EPOXY LINED AND COATED.	ANSI 125
5	VAL-MATIC AWWA C504 CLASS 150# FLANGED BUTTERFLY VALVE c/w GEAR OPERATOR, HANDWHEEL AND POSITION INDICATOR.	ANSI 150
6	VAL-MATIC AWWA C504 CLASS 150# FLANGED BUTTERFLY VALVE c/w GEAR OPERATOR, HANDWHEEL AND POSITION INDICATOR.	ANSI 150
7	PRESSURE GAUGE ASSEMBLY, ENFM psikPa DUAL SCALE, OIL FILLED, Ø100mm FACE, c/w ISOLATION VALVE FOR PRESSURE TRANSMITTERS.	
8	A.R.L. S450-C AUTOMATIC AIR RELEASE VALVE c/w 25mm ISOLATION BALL VALVE AND 180° VENT PIPE RETURN.	
9	A.R.L. D440-C COMBINATION AIR RELEASE & VACUUM VALVE c/w 25mm ISOLATION BALL VALVE AND 180° VENT PIPE RETURN.	
10	ROMAC D-400 ANSI CLASS 150# FLANGED RESTRAINER DISMANTLING JOINT c/w EPOXY COATING.	
11	SHURJOINT MODEL Z07 GROOVED RIGID COUPLING, FUSION EPOXY COATED.	
12	SHURJOINT MODEL Z07 GROOVED RIGID COUPLING, FUSION EPOXY COATED.	
13	EBAA IRON SERIES 3800 MEGA COUPLING RESTRAINER SILVEE TRANSITION COUPLING, STEEL X DIPVC CONNECTION, EBAA IRON MODEL #RS3806 OR EQUAL.	
14	19mm BALL VALVE OR HOSE END ASSEMBLY c/w VACUUM BREAKER FOR TEST, SAMPLE OR WASHDOWN.	
15	ADJUSTABLE 50mm SCH. 40 PIPE FLANGE OR SADDLE SUPPORT STANDS OF RATED LOAD CAPACITY. TO BE ANCHORED IN PLACE TO VAULT BASE SECTION, FUSION EPOXY COATED WITH SST THREADED ROD AND HARDWARE.	
16	PROVISIONS FOR A SINGLE PHASE 30AMP 240V HYDRO SERVICE c/w (2) 27mm CONDUITS TO PRV CHAMBERS FOR FUTURE SCADA MONITORING.	

PRESSURE REDUCING STATION
TYPICAL PRV STATION LAYOUT
(200mm and SMALLER)





TYPICAL GROUNDWATER MONITORING WELL SURFACE DESIGN	SCALE: nts
	REVISED: 05/08 APPROVED:
	APPROVED: _____ DWG. NO.
	DATE: 02/01 DW-5
DRAWN: SEH	



NOTES:

1. This detail to be used only for testing during construction.
2. Test points are not to be used for water main flushing.
3. Future service connection may be used as a sample point if configured as shown on this drawing.
4. Test points are to be located outside of roadway or in boulevard. Installations in manholes or confined spaces are not acceptable.
5. If sample point needs to be provided in an alternate method, City approval must be obtained.
6. This detail for services 19 to 50mm only.

TEST POINT INSTALLATION DURING WATER MAIN CONSTRUCTION

TEST POINT INSTALLATION



CITY OF CHILLIWACK

REVISED:

APPROVED:

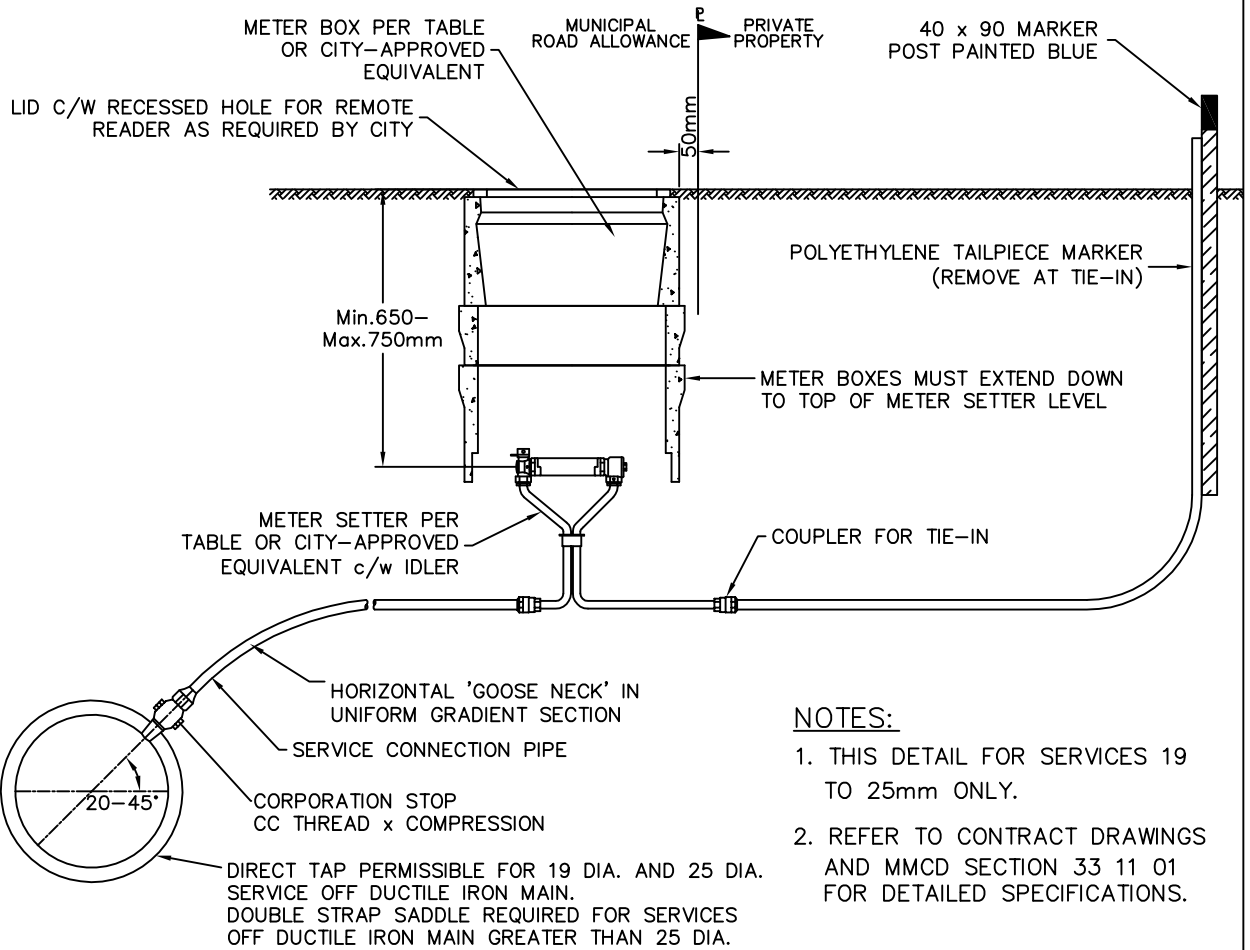
APPROVED:

DWG. NO.

DATE: 02/14

DW-6

DRAWN: SEH



NOTES:

1. THIS DETAIL FOR SERVICES 19 TO 25mm ONLY.
2. REFER TO CONTRACT DRAWINGS AND MMCD SECTION 33 11 01 FOR DETAILED SPECIFICATIONS.

SIZE	A.E. CONCRETE METER BOX/CHAMBER MODEL	METER SETTER MODEL
19mm (3/4")	B-937	Ford VBHH92-15W-44-33A-Q
25mm (1")	T266	Ford VBHH92-15W-44-44A-Q

19mm/25mm WATER PRE-SERVICE CONNECTION



REVISED: 12/01

APPROVED:

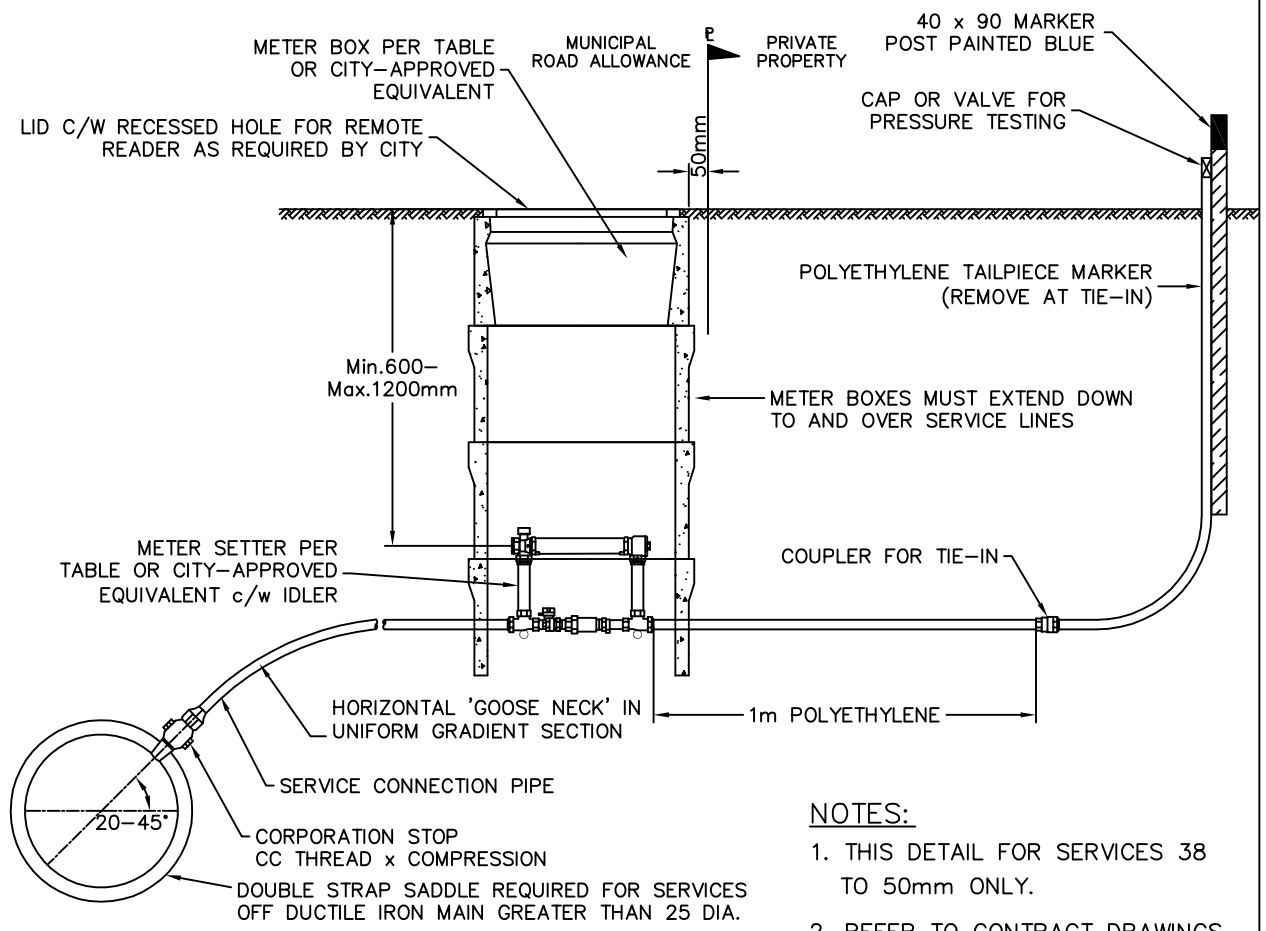
APPROVED:

DWG. NO.

DATE: 09/12

DW-7A

DRAWN: SEH



NOTES:

1. THIS DETAIL FOR SERVICES 38 TO 50mm ONLY.
2. REFER TO CONTRACT DRAWINGS AND MMCD SECTION 33 11 01 FOR DETAILED SPECIFICATIONS.

SIZE	A.E. CONCRETE METER BOX/CHAMBER MODEL	METER SETTER MODEL
38mm (1-1/2")	T266	Ford VBHH76-86-12BHC-1166 c/w #6 idler (13") and two (2) Ford model C84-66 pack joint couplers
50mm (2")	5686	Ford VBHH77-87-12BHC-1177 c/w #7 idler (17") and two (2) Ford model C87-77 pack joint couplers

38mm/50mm WATER PRE-SERVICE CONNECTION



REVISED: 13/09

APPROVED:

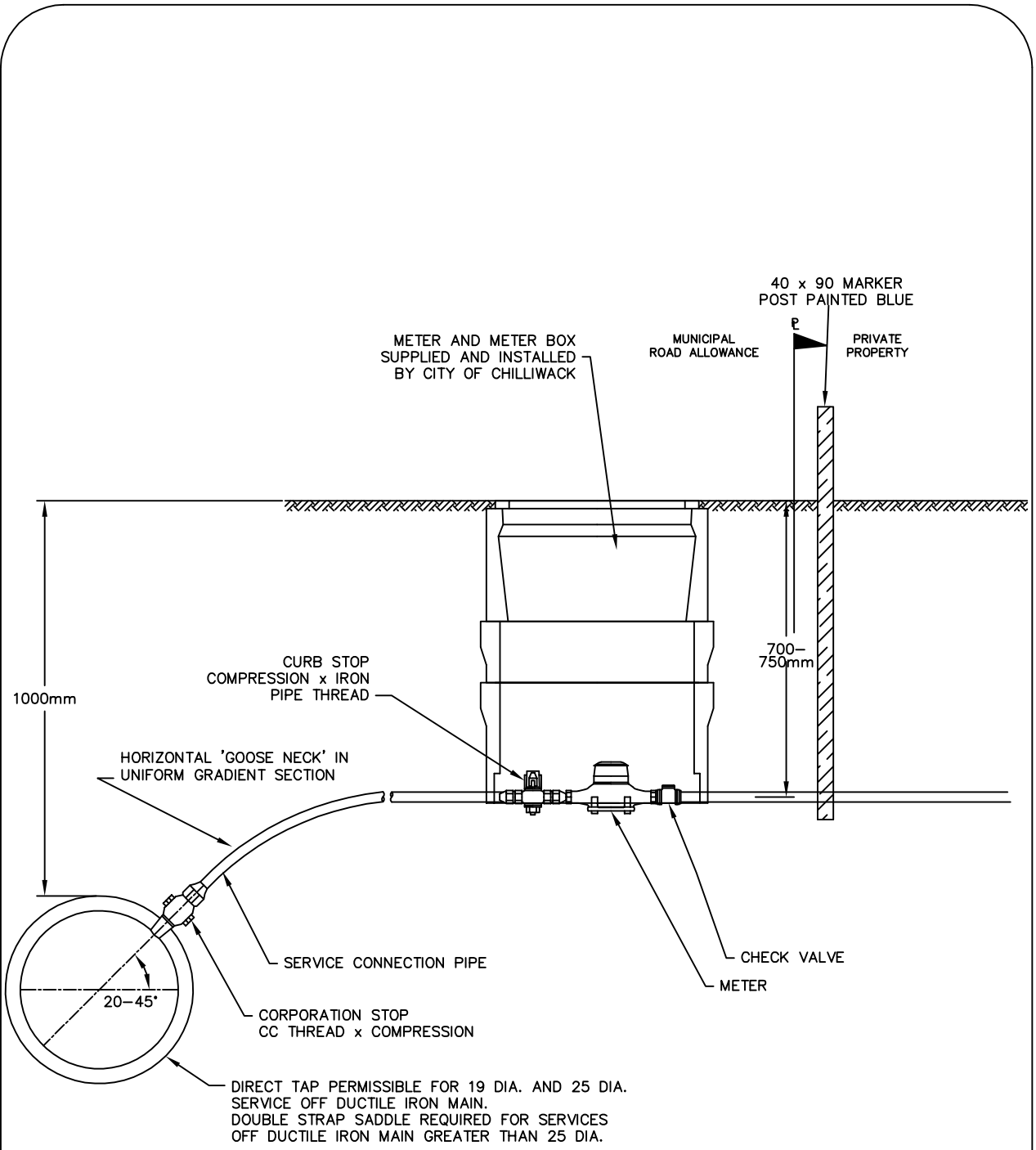
APPROVED:

DWG. NO.

DATE: 11/10

DW-7B

DRAWN: SEH



NOTE:

1. THIS DETAIL FOR SERVICES 19 TO 50mm ONLY.
2. REFER TO CONTRACT DRAWINGS AND MMCD SECTION 331101 FOR DETAILED SPECIFICATIONS.

WATER SERVICE CONNECTION



CITY OF CHILLIWACK

REVISED: 10/10

APPROVED:

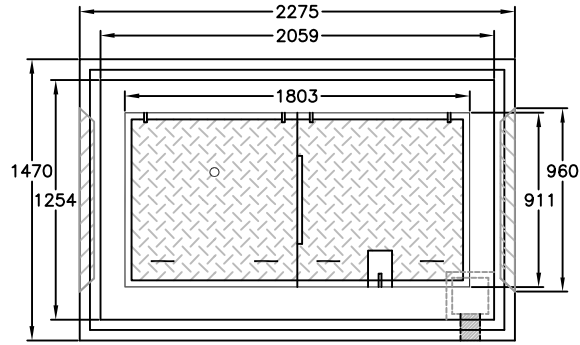
APPROVED:

DWG. NO.

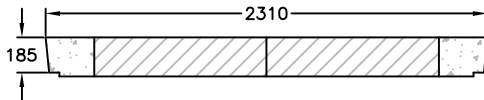
DATE: 05/08

DW-8

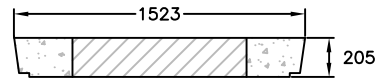
DRAWN: SEH



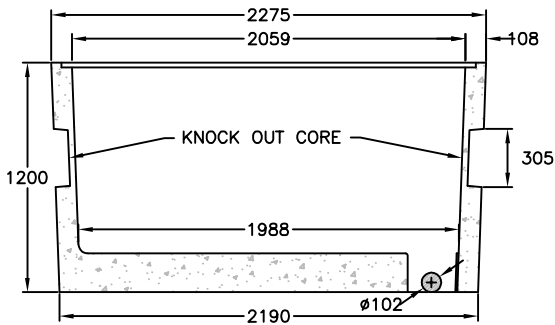
PLAN VIEW - VAULT



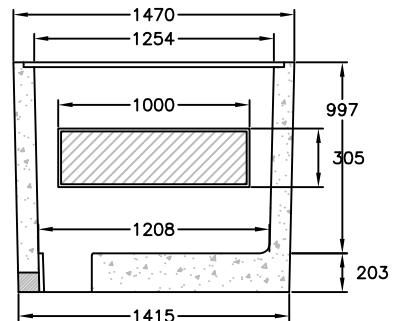
SIDE VIEW - LID



END VIEW - LID



SIDE VIEW - VAULT



END VIEW - VAULT

NOTES:

1. EXAMPLE ONLY. TO BE DISCUSSED WITH CITY OF CHILLIWACK MUNICIPAL DEVELOPMENT STAFF.

100mm, 150mm & 200mm WATER METER VAULT

REVISED:

APPROVED:

APPROVED:

DWG. NO.

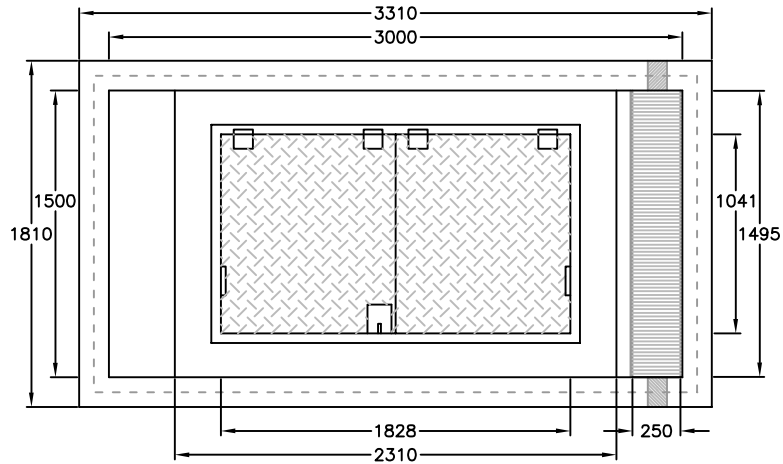
DATE: 02/10

DW-9

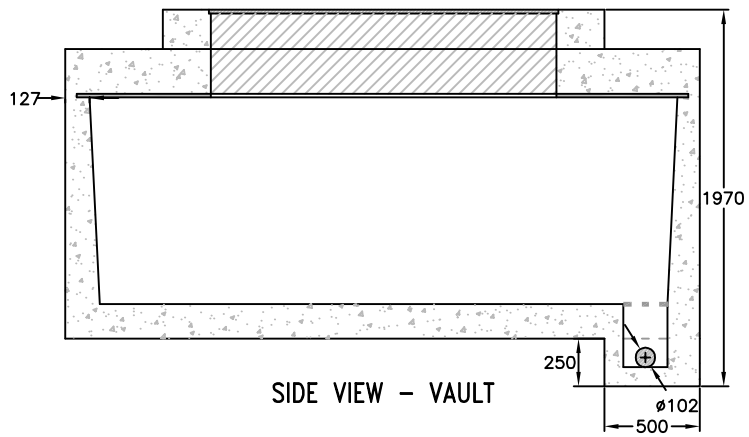
DRAWN: SEH



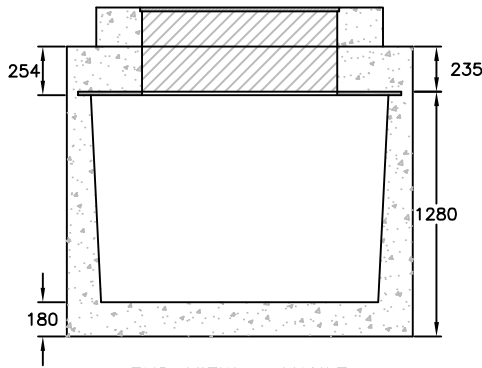
CITY OF CHILLIWACK



PLAN VIEW - VAULT



SIDE VIEW - VAULT



END VIEW - VAULT

NOTES:

1. EXAMPLE ONLY. TO BE DISCUSSED WITH CITY OF CHILLIWACK MUNICIPAL DEVELOPMENT STAFF.

250mm WATER METER VAULT



CITY OF CHILLIWACK

REVISED: 11/13

APPROVED:

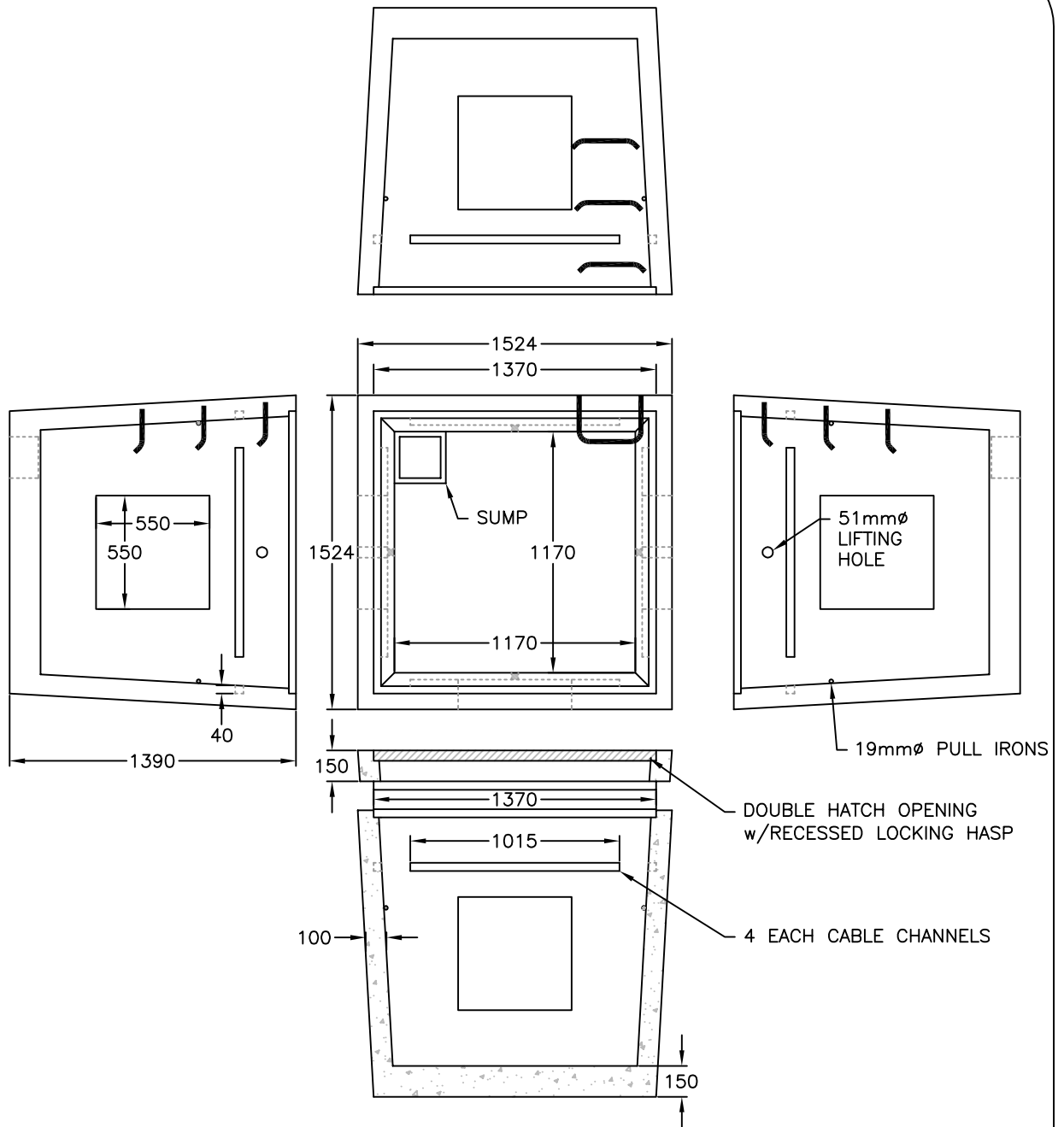
APPROVED:

DWG. NO.

DATE: 02/10

DW-10

DRAWN: SEH



NOTES:

1. EXAMPLE ONLY. TO BE DISCUSSED WITH CITY OF CHILLIWACK MUNICIPAL DEVELOPMENT STAFF.

DETECTOR CHECK VAULT



REVISED: 11/13

APPROVED:

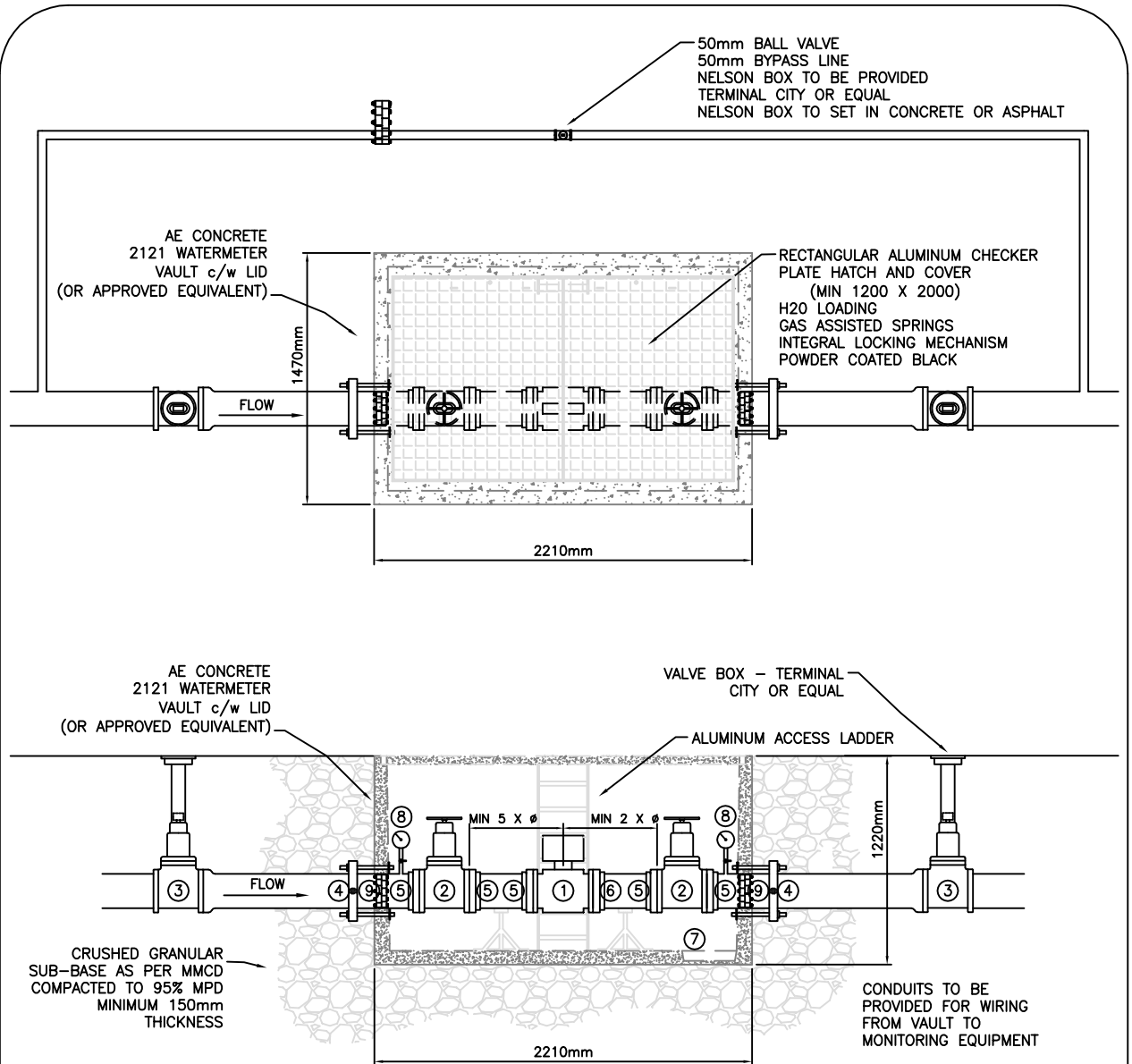
APPROVED:

DWG. NO.

DATE: 02/10

DW-11

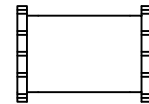
DRAWN: SEH



LEGEND

1. ABB Magnetic Flow Meter with Remote Display. Factory sealed and potted cables to be provided.
2. Resilient Seated Wedge Gate Valve NRS c/w Handwheel.
3. Resilient Seated Wedge Gate Valve NRS.
4. Restraint Coupling c/w Tie Down to vault.
5. Adapter Flange / Uni-Flange Series 200.
6. Dismantling Joint - "Victolic Coupling".
7. Sump to be connected to sanitary system or rockpit via a 100mm diameter connection.
8. Pressure Gauge c/w Ball Shut Off Valve.
9. Link Seal or approved equal.

SPOOL PIECE
FOR
METER REMOVAL
TO BE PROVIDED

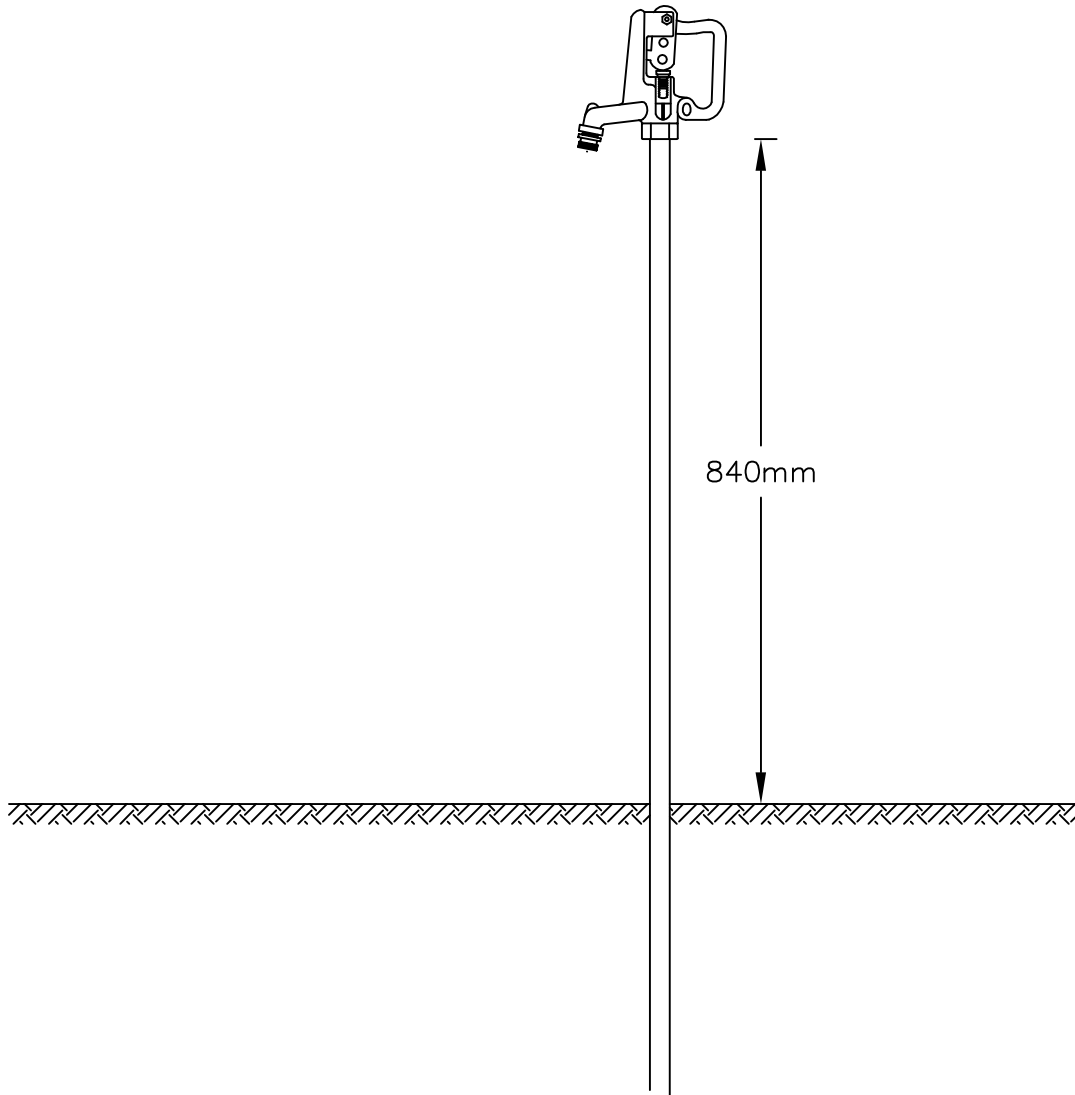


NOTE: All fitting and pipe work is to conform to Schedule 'A' of the Subdivision and Land Development Bylaw and/or MMCD.

WATER FLOW METER VAULT



REVISED: 12/13	APPROVED:	
APPROVED:	DATE: 05/07	DWG. NO. DW-12
DRAWN: JB		



NOTE:

1. MERRILL C-1000 SERIES YARD HYDRANT OR APPROVED EQUIVALENT.

YARD HYDRANT



REVISED:

APPROVED:

APPROVED:

DWG. NO.

DATE: 09/12

DW-13

DRAWN: SEH